



# DC BLOCK

# SMA Series 0.01-18GHz

## Features

- ✓ Frequency up to 18 GHz
- ✓ 200V Protect DC Block
- ✓ Low VSWR & Insertion Loss

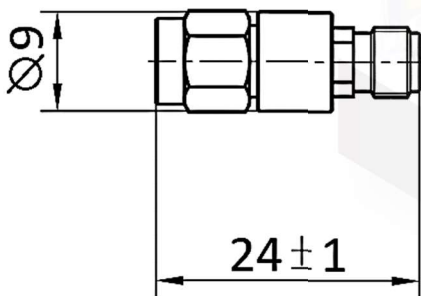


## Specifications

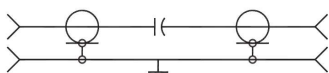
<b>PART NUMBER</b>	MVE6114
<b>DESCRIPTION</b>	SMA M/F Inner 200V DC Block, 0.01-18GHz Stainless
<b>ELECTRICAL</b>	
FREQUENCY : 0.01-18GHz IMPEDANCE: 50ohm INSERTION LOSS: 0.7dB MAX. VSWR: 1.30:1MAX. WORKING VOLTAGE: 200V OPERATING TEMPERATURE: -55°C~+ 100°C	
<b>MATERIALS</b>	
CONNECTOR: STAINLESS STEEL, PASSIVATED CONDUCTORS: BERYLLIUM COPPER, GOLD PLATED	

Tolerance: ±0.1mm

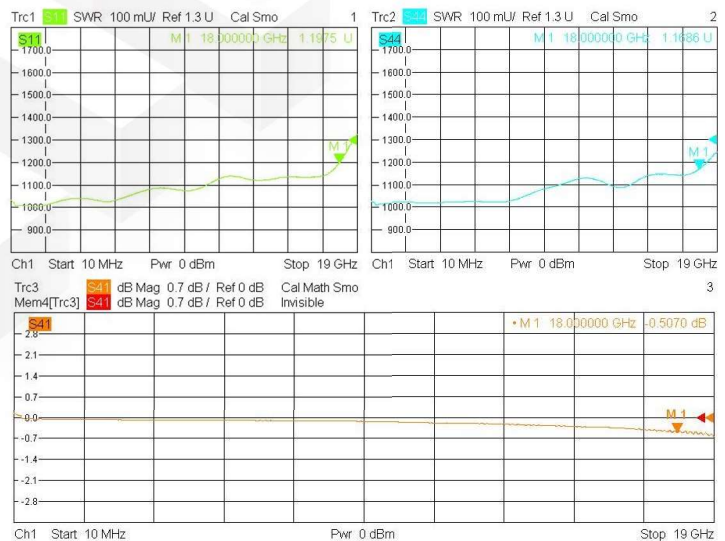
## Outline Drawing (Unit: mm)



## Electrical Schematic



## Typical Test Result



NOTES:

1. ALL SPECIFICATIONS ARE SUBJECT TO CHANGE WITHOUT NOTICE AT ANY TIME
2. CUSTOMER OUTLINE DRAWING FOR REFERENCE ONLY

