



# COAXIAL CONNECTOR

# SMP TYPE For Cable Assembly

## Features

- ✓ Frequency up to 50GHz
- ✓ Low VSWR
- ✓ High Durability

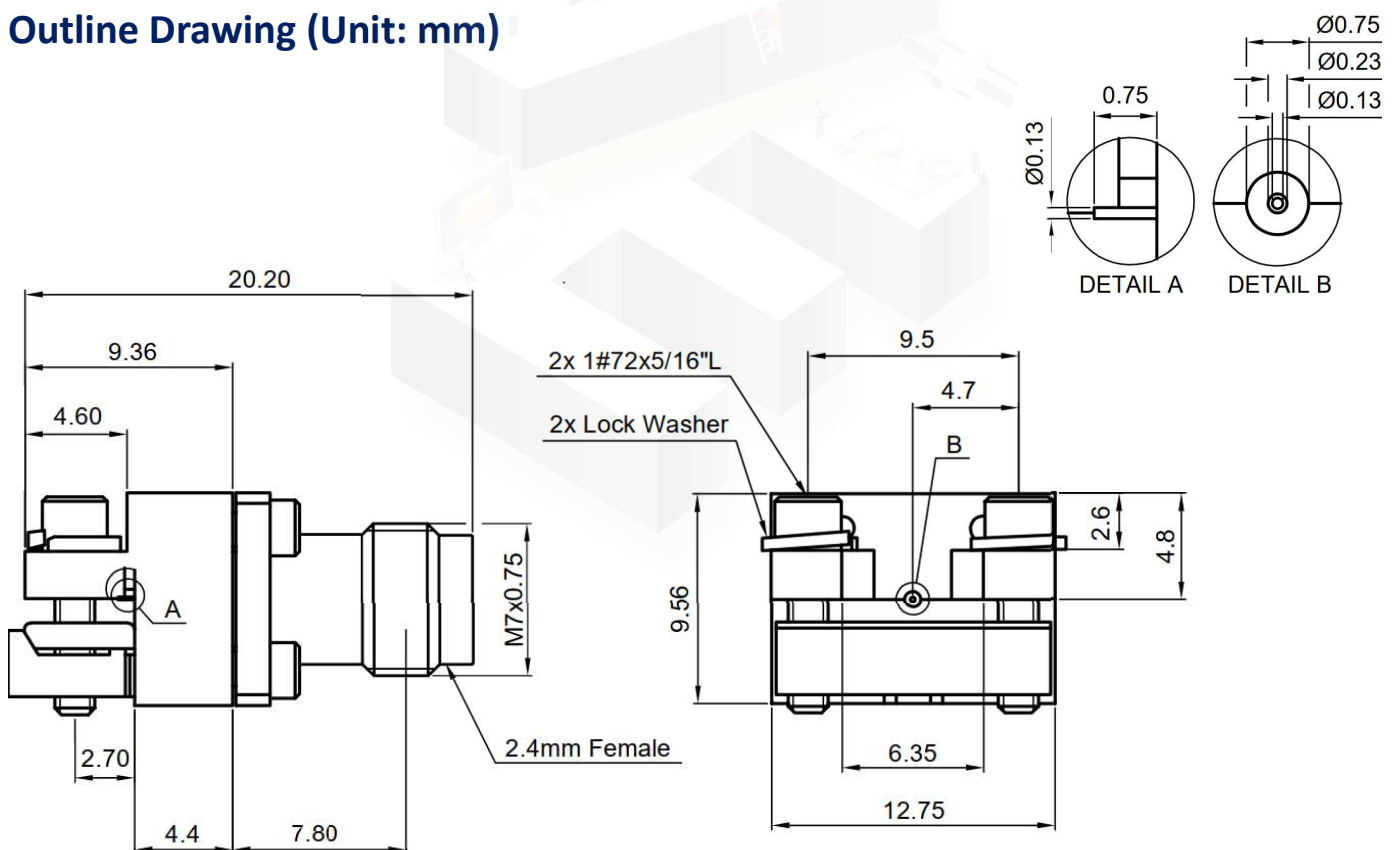


## Specifications

<b>PART NUMBER</b>	<b>MVE3723-013</b>
<b>DESCRIPTION</b>	2.4mm Female S/T End Launch For PCB Connector, DC-50GHz
<b>ELECTRICAL</b>	<b>MATERIALS</b>
FREQUENCY: DC-50GHz IMPEDANCE: 50 Ω DURABILITY: >500 CYCLES	BODY: STAINLESS STEEL, PASSIVATED PIN CONTACT: BERYLLIUM COPPER ALLOY, GOLD PLATED INSULATOR: PTFE & PEL

TOLERANCE: X=±0.5 X.X=±0.2 X.XX=±0.13

## Outline Drawing (Unit: mm)



NOTES:

1. ALL SPECIFICATIONS ARE SUBJECT TO CHANGE WITHOUT NOTICE AT ANY TIME
2. CUSTOMER OUTLINE DRAWING FOR REFERENCE ONLY





## Typical Test Result

