



SWITCH MVE9212

**SPDT
FAILSAFE TTL**

Features

- ✓ Frequency up to 18 GHz
- ✓ Low Insertion Loss
- ✓ High Life Cycles



SPECIFICATIONS

RF CHARACTERISTICS						
FREQUENCY RANGE	0-2GHz	2-4GHz	4-8GHz	8-12GHz	12-18 GHz	
VSWR MAX.	1.15:1	1.20:1	1.30:1	1.4:1	1.5:1	
INSERTION LOSS MAX.	0.20dB	0.20dB	0.25dB	0.35dB	0.40dB	
ISOLATION MIN.	90dB	80dB	75dB	65dB	60dB	
AVERAGE POWER AT COOL SWITCHING	50W	40W	30W	20W	10W	
ELECTRICAL CHARACTERISTICS						
ACTUATOR	FAILSAFE / TTL					
COIL CURRENT	DC 12V / 150mA					
DRIVE VOLTAGE	2.5-5V					
DRIVE CURRENT	0.02-0.8mA					
MECHANICAL CHARACTERISTICS						
CONNECTORS	SMA Female					
LIFE CYCLES	1,000,000					
SWITCHING TIME	<20ms					
WEIGHT	45g					
ENVIRONMENTAL CHARACTERISTICS						
TEMPERATURE RANGE	-20°C-+65°C					

NOTES:

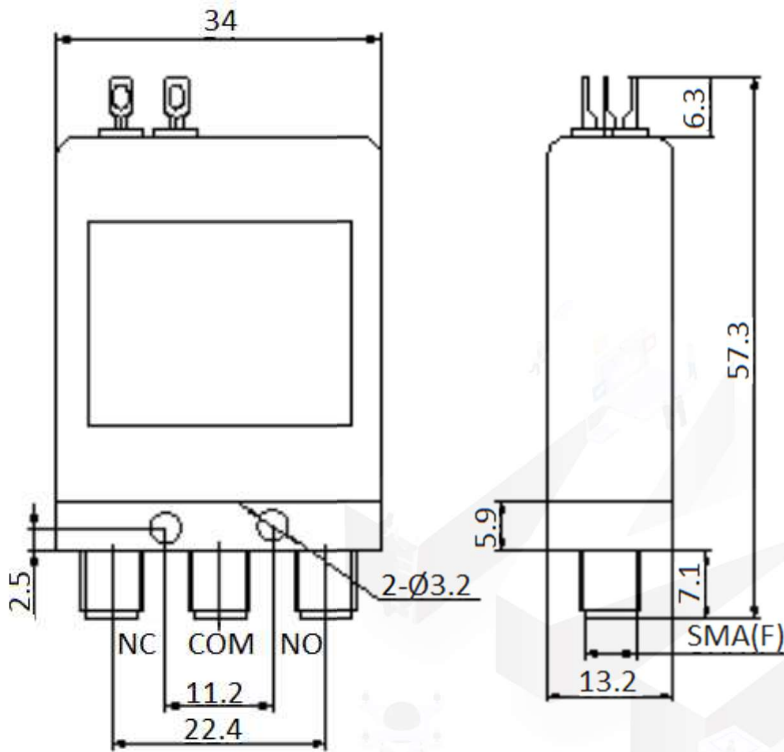
1. ALL SPECIFICATIONS ARE SUBJECT TO CHANGE WITHOUT NOTICE AT ANY TIME
2. CUSTOMER OUTLINE DRAWING FOR REFERENCE ONLY



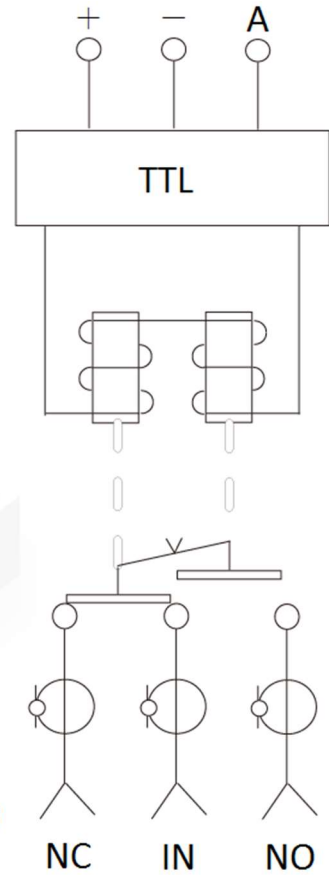


Tolerance: X= ±5%

Outline Drawing (Unit: mm)



Electrical Schematic:



*NOTE: ALUMINUM BODY (Aluminum scratches more easily than more durable materials.)

SCHEMATIC DIAGRAM

PIN	CONTROL	DRIVE VOLTAGE(V)	DRIVE CURRENT (mA)
1	1+	DC12	150mA
2	GND	/	/
3	A	2.5-5	0.02-8

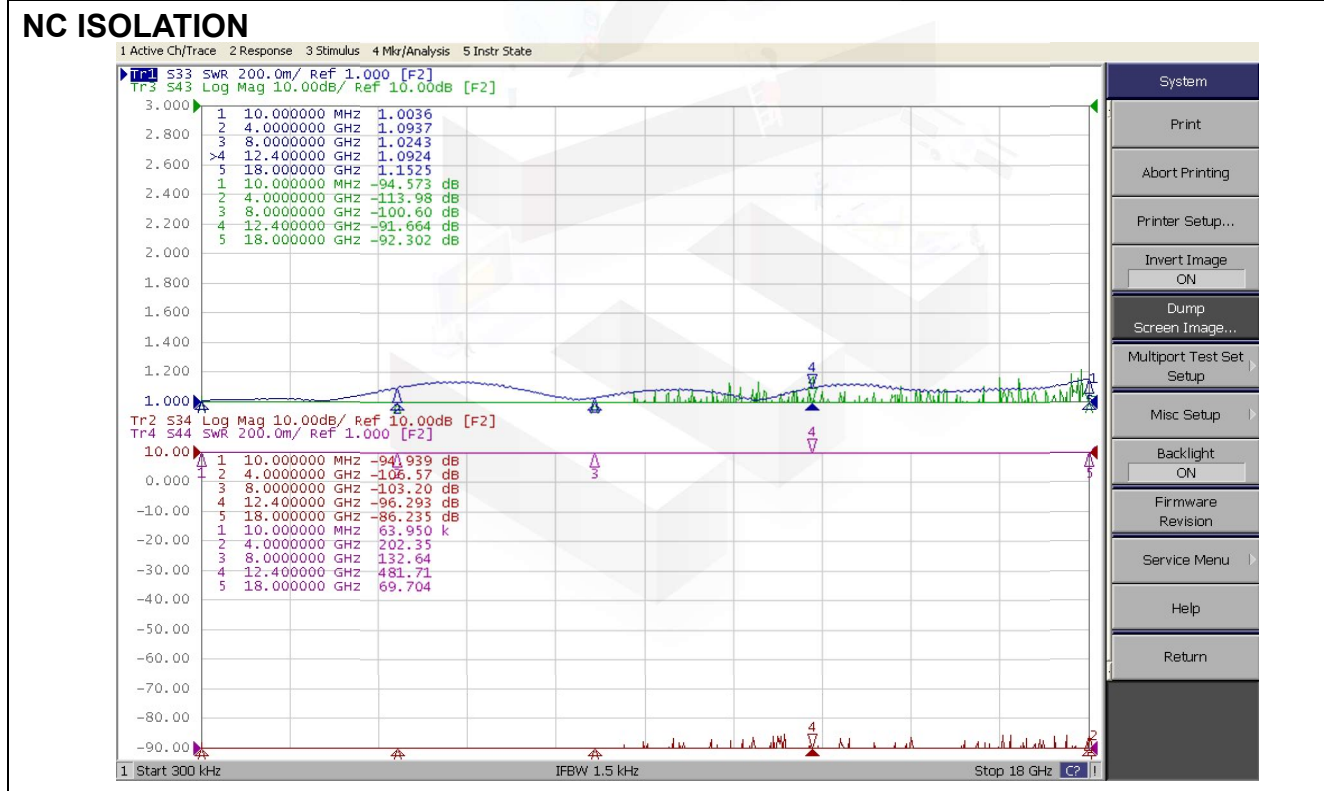
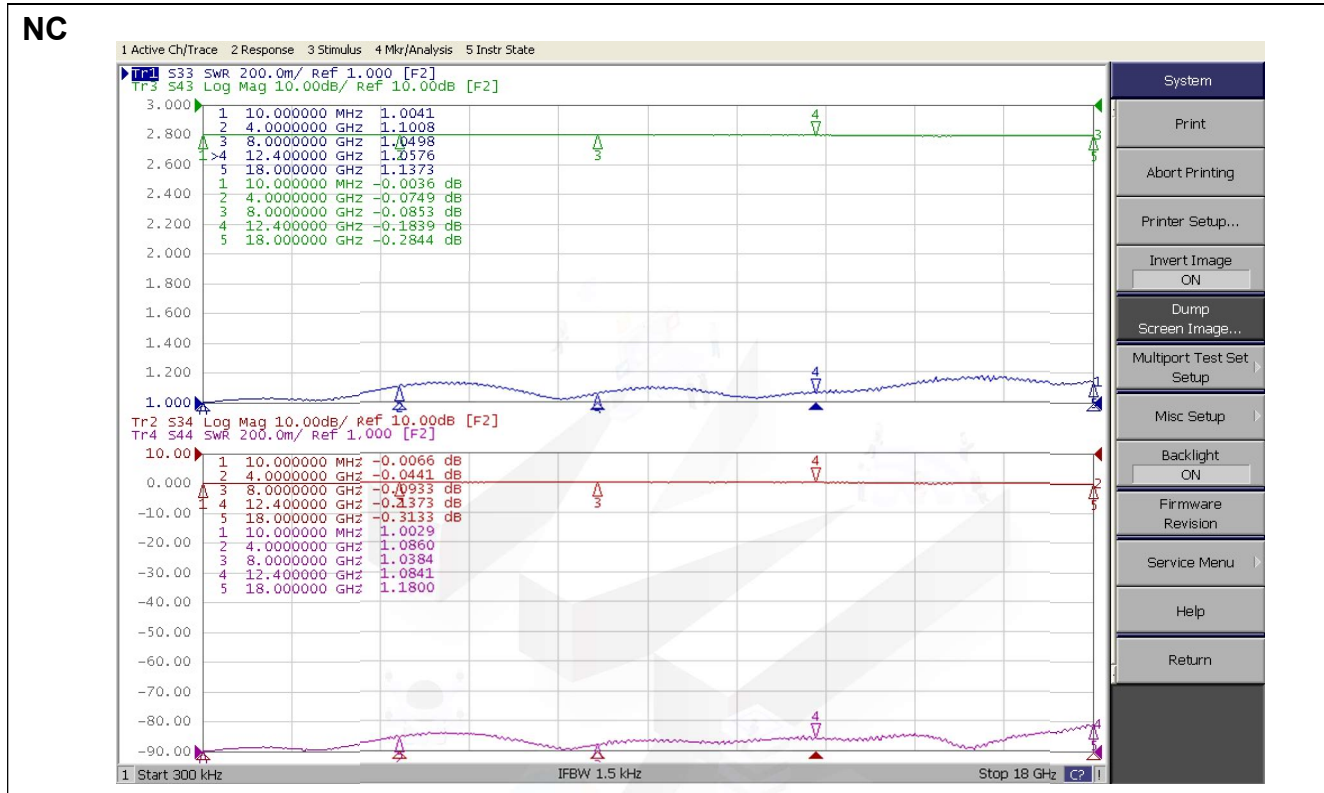
NOTES:

1. ALL SPECIFICATIONS ARE SUBJECT TO CHANGE WITHOUT NOTICE AT ANY TIME
2. CUSTOMER OUTLINE DRAWING FOR REFERENCE ONLY



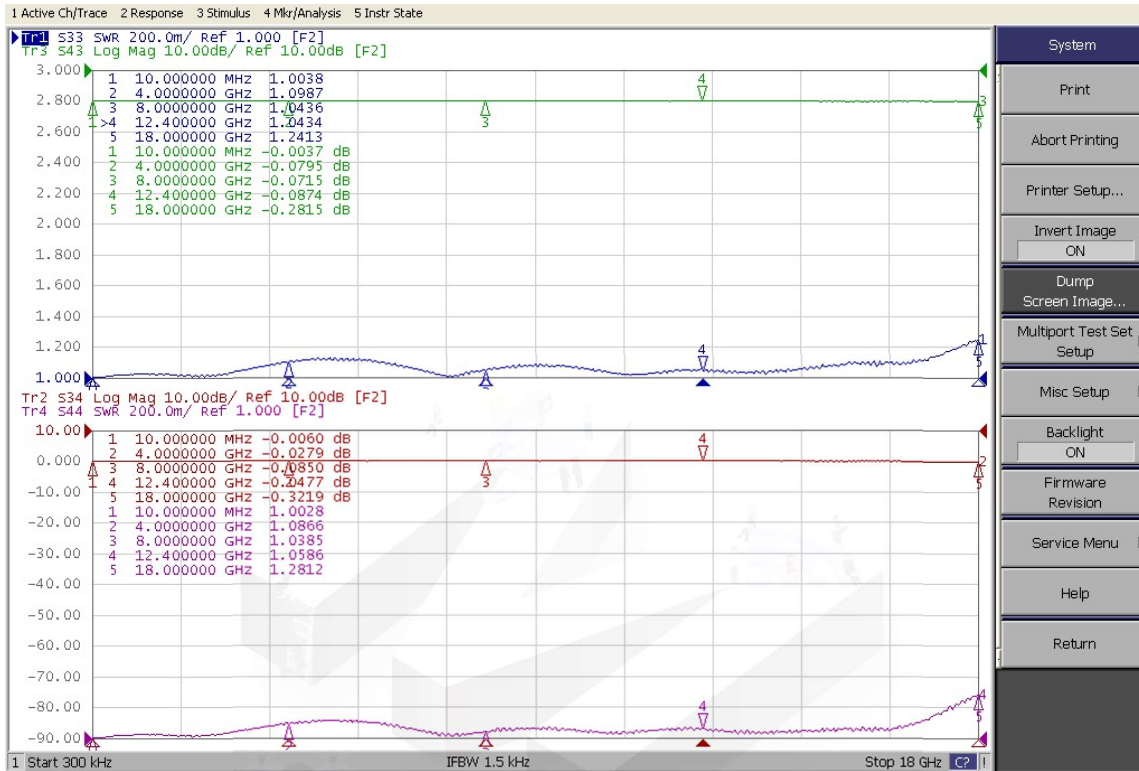


Typical Test Result





NO



NO ISOLATION

