

ELECTRICAL DATA

FREQUENCY : DC-11GHz

IMPEDANCE: 50Ω

VSWR: 1.4:1 MAX.(DC-3GHz)

1.8:1 MAX.(3-6GHz)

2.1 MAX.(6-11GHz)

INSERTION LOSS: DC-3GHz<0.4dB/3-6GHz<0.85dB/6-11GHz<1.4dB

INSULATION RESISTANCE: 1000 Mega-Ohms

DIELECTRIC WITHSTANDING VOLTAGE: 500Vrms

CENTER CONTACT RESISTANCE: 10.0 Mini-Ohms

OUTER CONTACT RESISTANCE: 6.0 Mini-Ohms

MECHANICAL DATA

COUPLING METHOD: FLOATING/SNAP-ON

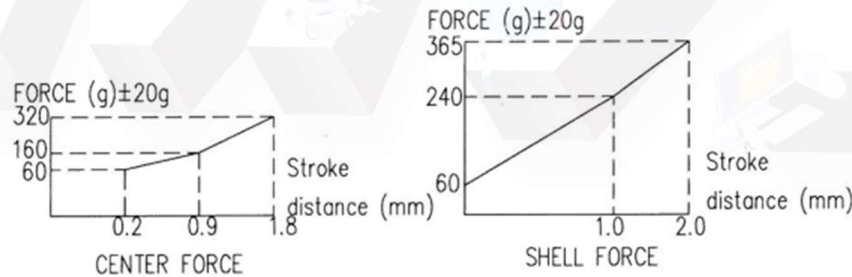
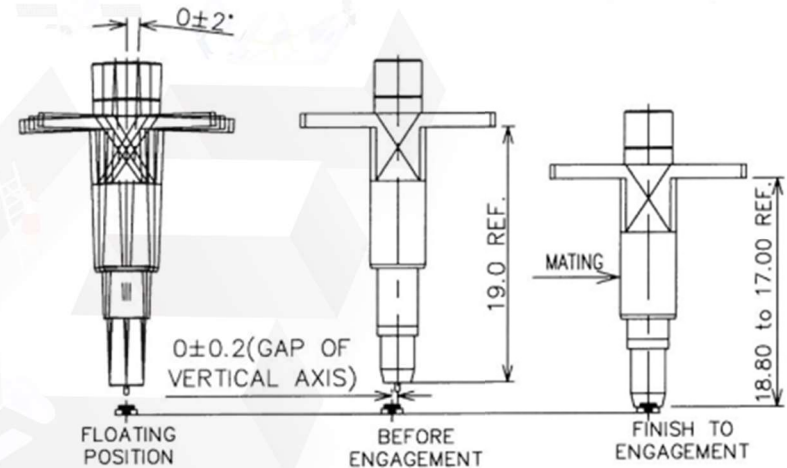
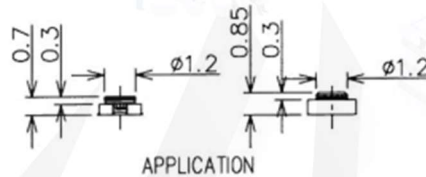
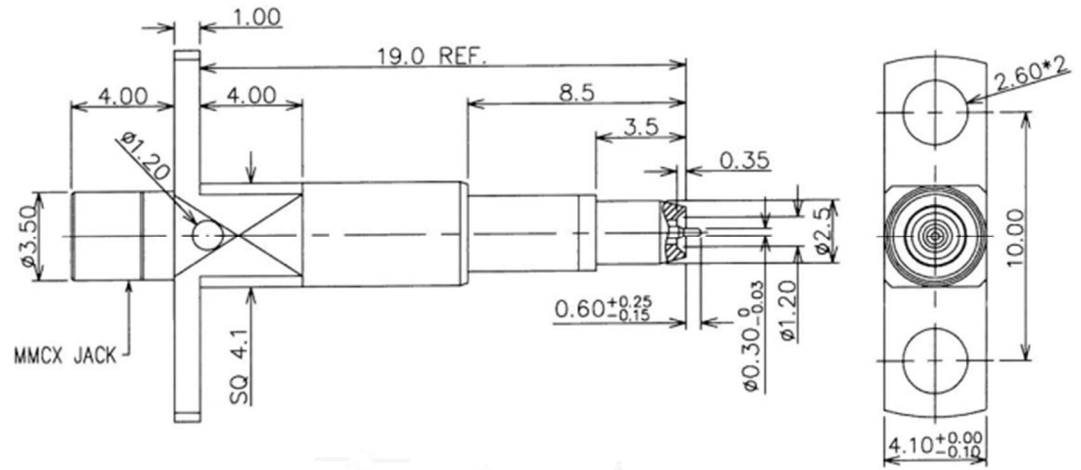
TEMPERATURE RANGE: -65~165°C

DURABILITY: MMCX-500 CYCLES MIN.

MM8930-10K CYCLES MIN.

APPLICATION

Fully mating with MM8930, MS180



DESCRIPTION	MATERIALS	ROHS COMPLIANCE	UNIT: mm
BODY	STAINLESS STEEL , GOLD PLATED	TOLERANCE: X=±0.38 X.X=±0.25 X.XX=±0.15	
CONTACT	PHOSPHOR BRONZE / STEEL	TITLE MMCX Female To MM8930/MS180 Probe Adapter ,DC-11GHz	
SPRING	STAINLESS STEEL		
INSULATOR	TEFLON		

MVE 芝程科技有限公司
Marvelous Microwave Inc.
www.micro-mve.com sales@micro-mve.com +886-2-2602-0660



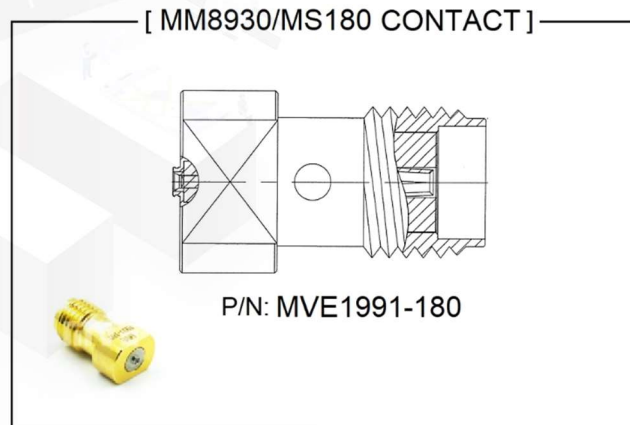
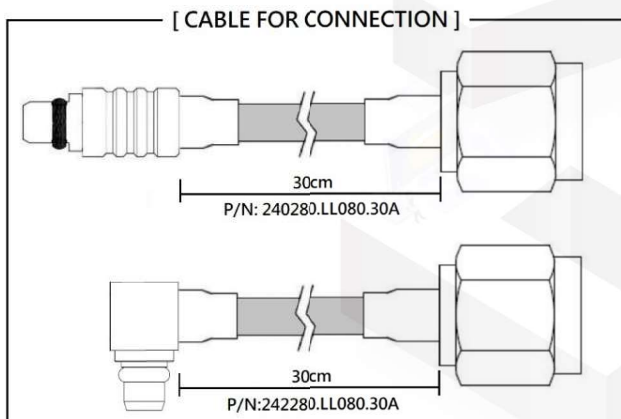
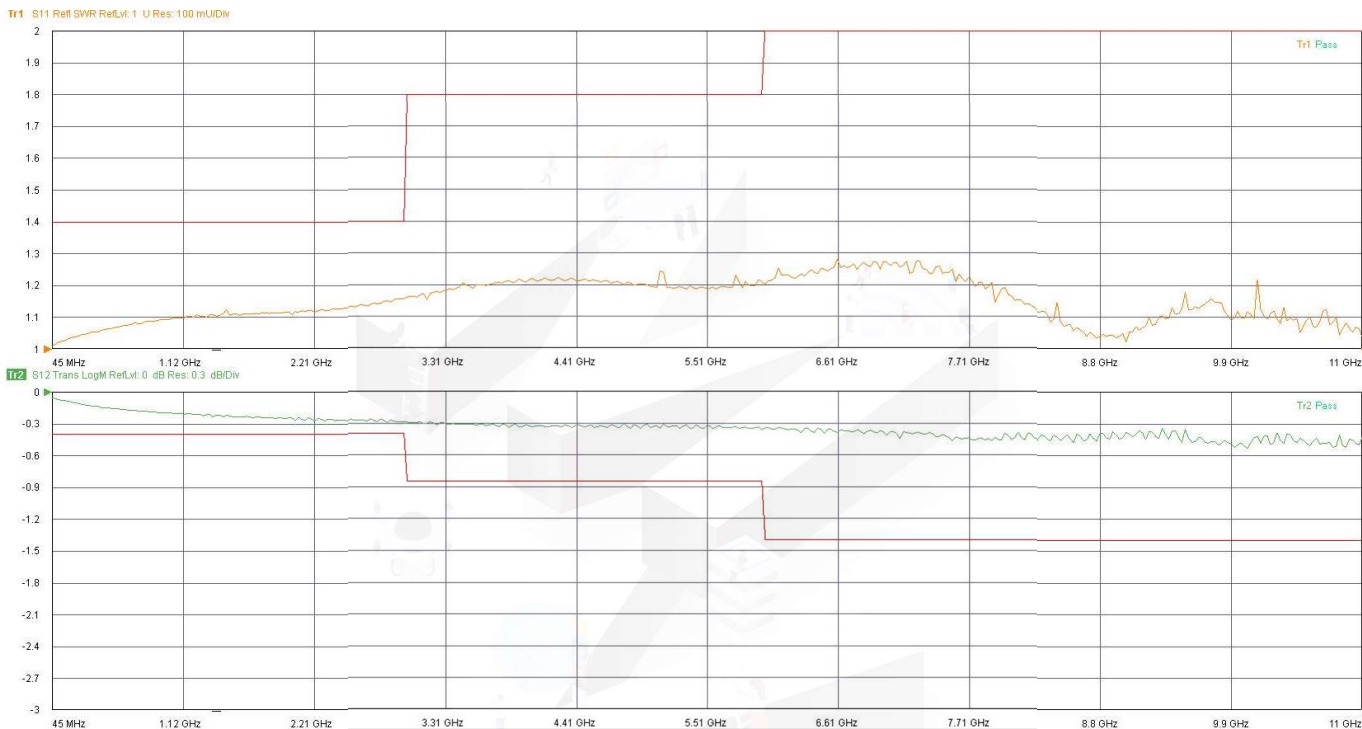
PART NO.	MVE1999-1.1	REV	2.1
SIZE: A	SHEET: 1/1	SCALE:	

NOTES

1. ALL SPECIFICATIONS ARE SUBJECT TO CHANGE WITHOUT NOTICE AT ANY TIME
2. CUSTOMER OUTLINE DRAWING FOR REFERENCE ONLY

Typical Test Result

PART NUMBER	DESCRIPTION
MVE1999-1.1	MMCX Female To MM8930/MS180 Probe Adapter ,DC-11GHz



NOTES

1. ALL SPECIFICATIONS ARE SUBJECT TO CHANGE WITHOUT NOTICE AT ANY TIME
2. CUSTOMER OUTLINE DRAWING FOR REFERENCE ONLY