

ELECTRICAL DATA

FREQUENCY : DC-8GHz

IMPEDANCE: 50Ω

VSWR: 1.30:1@DC-6GHz

1.50:1@DC6-8GHz

INSULATION RESISTANCE: 1000Mega-ohms

DIELECTRIC WITHSTANDING: 500Vrms

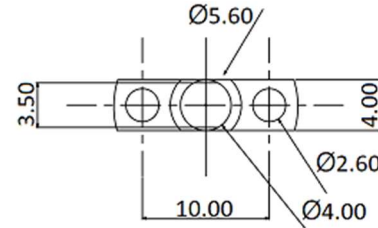
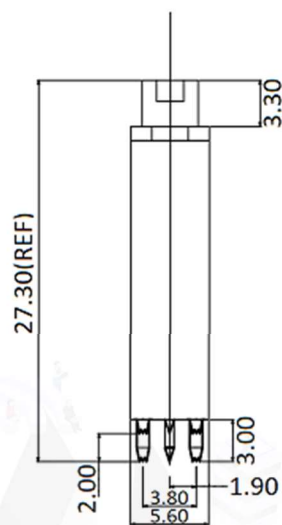
MECHANICAL DATA

COUPLING METHOD: THREADED

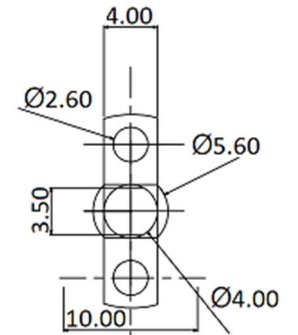
TEMPERATURE RANGE: -65-165° C

DURABILITY: 11000 CYCLES

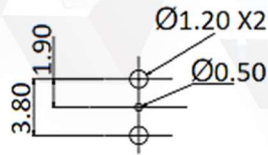
ROHS COMPLIANCE



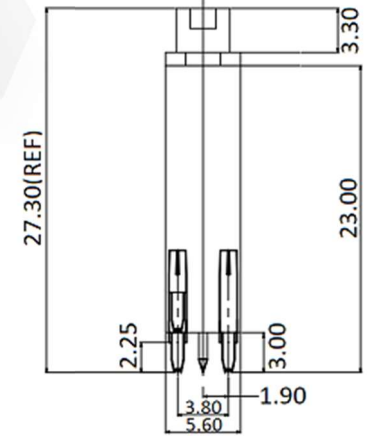
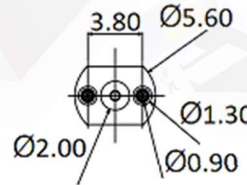
TOP VIEW



COMPRESSION STORKE 2.0mm



PCB LAYOUT



MVE 芝程科技有限公司
Marvelous Microwave Inc.

www.micro-mve.com sales@micro-mve.com +886-2-2602-0660



DESCRIPTION	MATERIALS	ROHS COMPLIANCE	UNIT: mm
BODY	BRASS, GOLD PLATED	TOLERANCE: X=±0.2 X.X=±0.1 X.XX=±0.05	
CONTACT PIN	BRASS, GOLD PLATED	TITLE	
INSULATOR	TEFLON	MMCX Female To RF PCB Probe, DC-8GHz, (Center pin:Type A, 2 GND pin:Type 1)(Pitch 3.8)(Vertical type)	
SPRING	STAINLESS SUS304		

PART NO.

MVE1982-3.8B

REV
3.1

SIZE: A

SHEET: 1/1

SCALE:

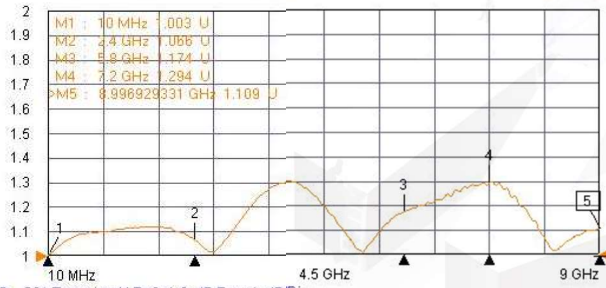
NOTES

1. ALL SPECIFICATIONS ARE SUBJECT TO CHANGE WITHOUT NOTICE AT ANY TIME
2. CUSTOMER OUTLINE DRAWING FOR REFERENCE ONLY

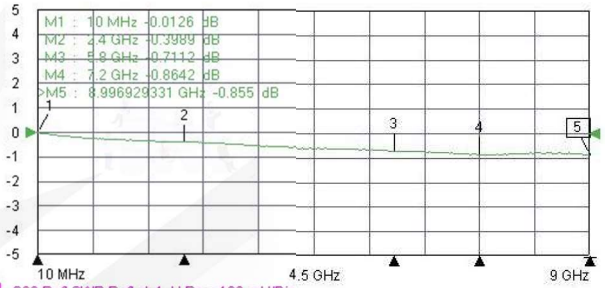
Typical Test Result

PART NUMBER	DESCRIPTION
MVE1982-3.8B	MMCX Female To RF PCB Probe, DC-8GHz, (Center pin:Type A, 2 GND pin:Type 1)(Pitch 3.8)(Vertical type)

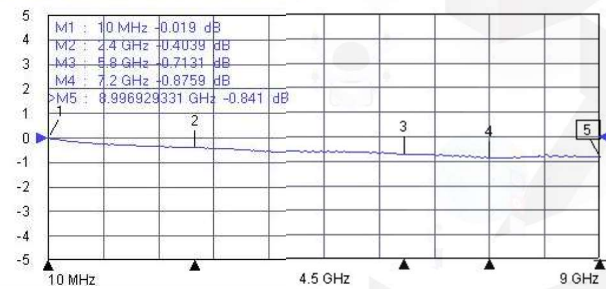
Tr1 S11 Refl SWR RefLvl: 1 U Res: 100 mU/Div



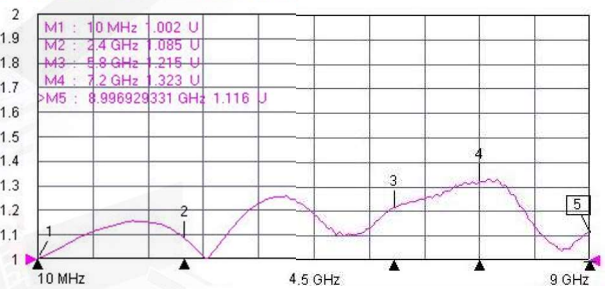
Tr2 S12 Trans LogM RefLvl: 0 dB Res: 1 dB/Div



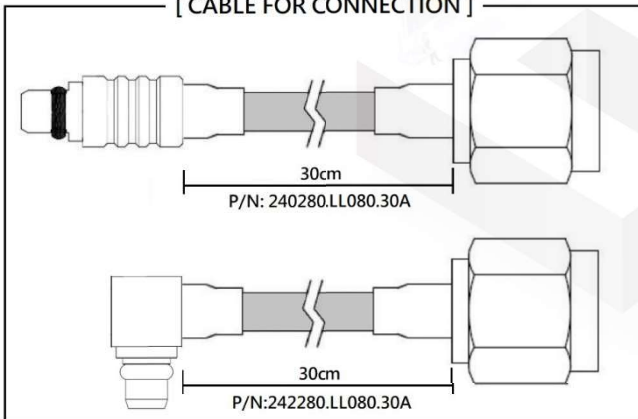
Tr3 S21 Trans LogM RefLvl: 0 dB Res: 1 dB/Div



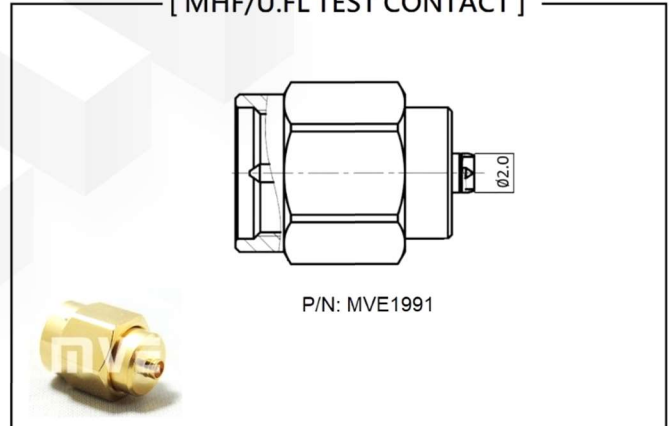
Tr4 S22 Refl SWR RefLvl: 1 U Res: 100 mU/Div



[CABLE FOR CONNECTION]



[MHF/U.FL TEST CONTACT]



NOTES

1. ALL SPECIFICATIONS ARE SUBJECT TO CHANGE WITHOUT NOTICE AT ANY TIME
2. CUSTOMER OUTLINE DRAWING FOR REFERENCE ONLY