

## ELECTRICAL DATA

FREQUENCY : DC-8GHz

IMPEDANCE: 50Ω

VSWR:1.3:1 MAX. (DC-3GHz) / 1.5:1 TYP. (3-8GHz)

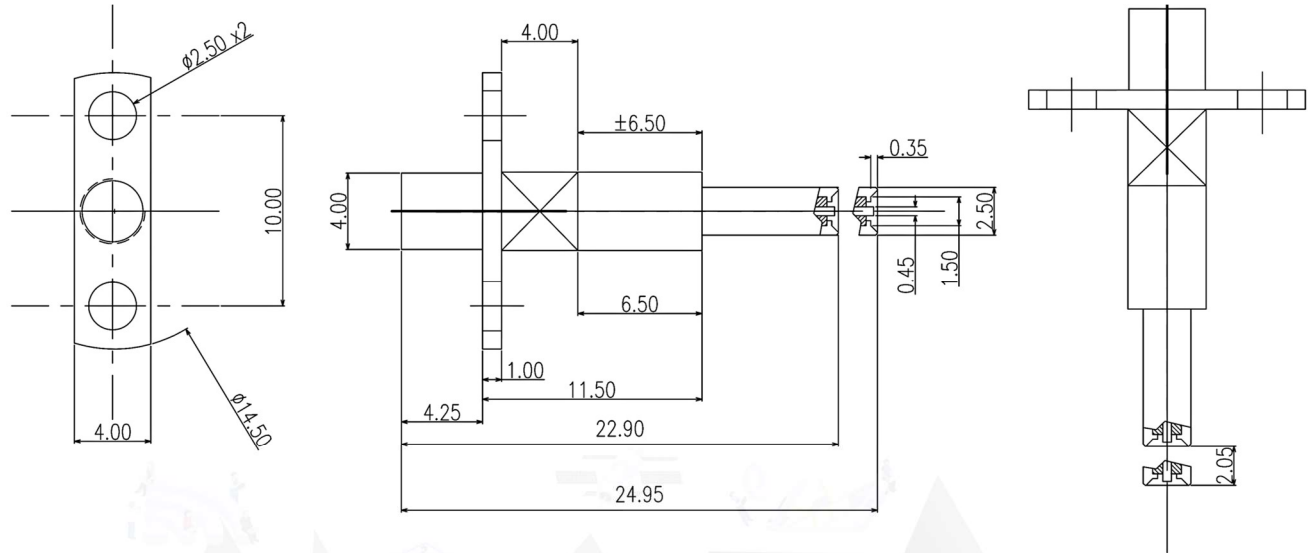
INSERTION LOSS: ≤ 1.0 dB

## MECHANICAL DATA

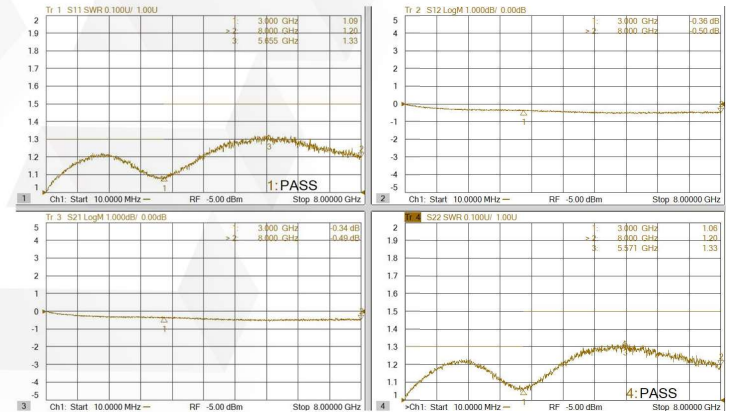
DURABILITY(MATING/UNMATING): 30K Cycles

## APPLICATION

Fully mating with MHF4.



## Typical Test Result



DESCRIPTION	MATERIALS	ROHS COMPLIANCE	UNIT: mm
SPRING	SUS304, NICKEL PLATED	TOLERANCE: X=±0.38 X.X=0.25 X.XX=±0.15	
CENTER	BRASS, GOLD PLATED	TITLE MMCX Female To MHF4 Probe Adapter, DC-8GHz	
BODY CONTACT	BRASS, GOLD PLATED		
BODY	BRASS, NICKEL PLATED		

**MVE** 芝程科技有限公司  
Marvelous Microwave Inc.

www.micro-mve.com sales@micro-mve.com +886-2-2602-0660



PART NO.

**MVE1967C**

REV

**1.2**

SIZE: A

SHEET: 1/1

SCALE:

## NOTES

1. ALL SPECIFICATIONS ARE SUBJECT TO CHANGE WITHOUT NOTICE AT ANY TIME
2. CUSTOMER OUTLINE DRAWING FOR REFERENCE ONLY