



COAXIAL ADAPTER

SMA-SMA Standard Series

Features

- ✓ High performance design
- ✓ Frequency Range DC to 10GHz
- ✓ Low VSWR

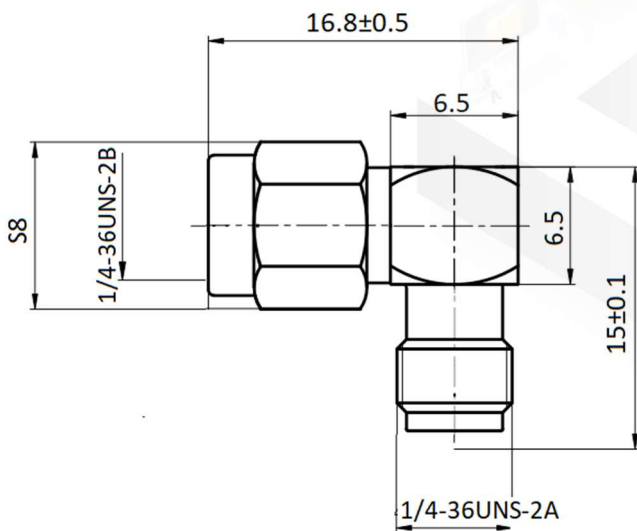


Specifications

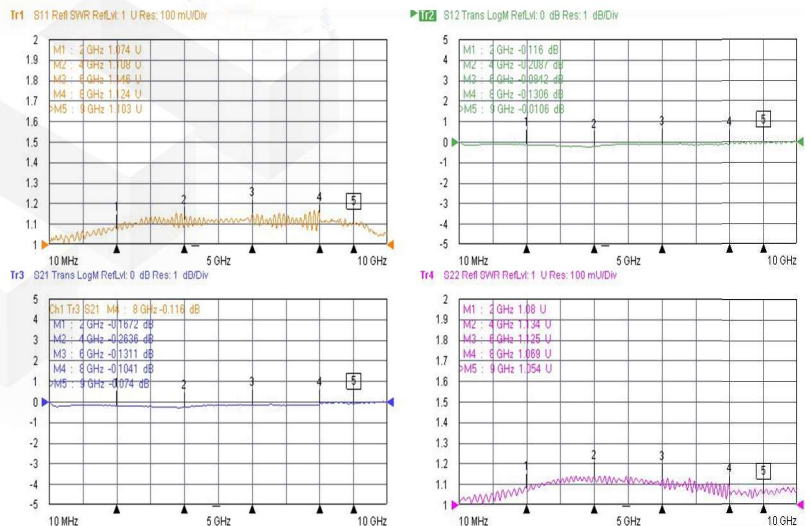
| | |
|---|---|
| PART NUMBER | MVE1712B |
| DESCRIPTION | SMA Male To SMA Female R/A Adapter, DC-10GHz |
| ELECTRICAL | MATERIALS |
| FREQUENCY : DC-10GHz IMPEDANCE: 50Ω WORKING VOLTAGE: 500V MAX. DIELECTRIC WITHSTANDING VOLTAGE: 1000Vrms MAX. INSULATOR RESISTANCE: 5000MΩ MIN. VSWR: 1.25:1 | BODY: BRASS, GOLD PLATED CONTACT: BRASS COPPER, GOLD PLATED SHELL: BRASS, GOLD INSULATOR: PTFE |

Tolerance: X=±0.2 .X=±0.1 .XX=±0.05

Outline Drawing (Unit: mm)



Typical Test Result



NOTES:

1. ALL SPECIFICATIONS ARE SUBJECT TO CHANGE WITHOUT NOTICE AT ANY TIME
2. CUSTOMER OUTLINE DRAWING FOR REFERENCE ONLY

