

## ELECTRICAL DATA

FREQUENCY : DC-8GHz

IMPEDANCE: 50Ω

VSWR: 1.5:1 MAX.@8GHz

DIELECTRIC WITHSTANDING VOLTAGE: 250 Vrms

INSULATION RESISTANCE: 1000Mega Ohms

CENTER CONTACT RESISTANCE: 6.0 mini Ohm

OUTER CONTACT RESISTANCE: 2.5 mini Ohm

## MECHANICAL DATA

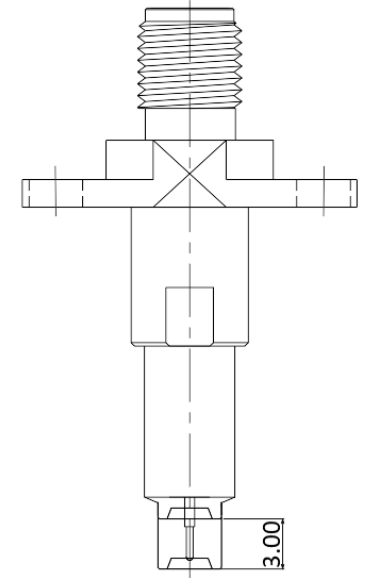
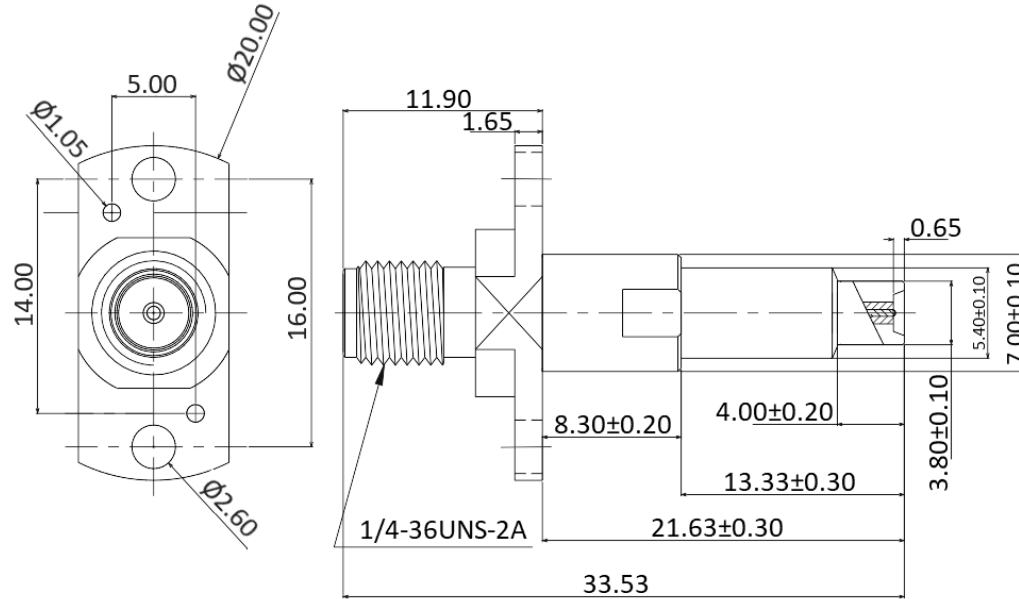
COUPLING METHOD:THREADED

DURABILITY(MATING/UNMATING):10000 Cycles

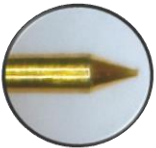
## APPLICATION



Fully mating with MM8430/MM8130



COMPRESSION STROKE 3.0mm



DESCRIPTION	MATERIALS	ROHS COMPLIANCE	UNIT: mm
BODY	BRASS, GOLD PLATED	TOLERANCE: X=±0.38 X.X=±0.25 X.XX=±0.15	
CENTER PIN	BRASS, GOLD PLATED	TITLE	
SPRING	SUS304	SMA Female To MM8430 Test Probes	
INSULATOR	TEFLON	(Pin:A3.5mm), DC-8GHz, positioning hole: O1.05	



芝程科技有限公司

[www.micro-mve.com](http://www.micro-mve.com)

DC-67GHz RF& Microwave Components

PART NO.

**MVE1971H-A1-B**

REV  
1.1

SIZE: A

SHEET: 1/1

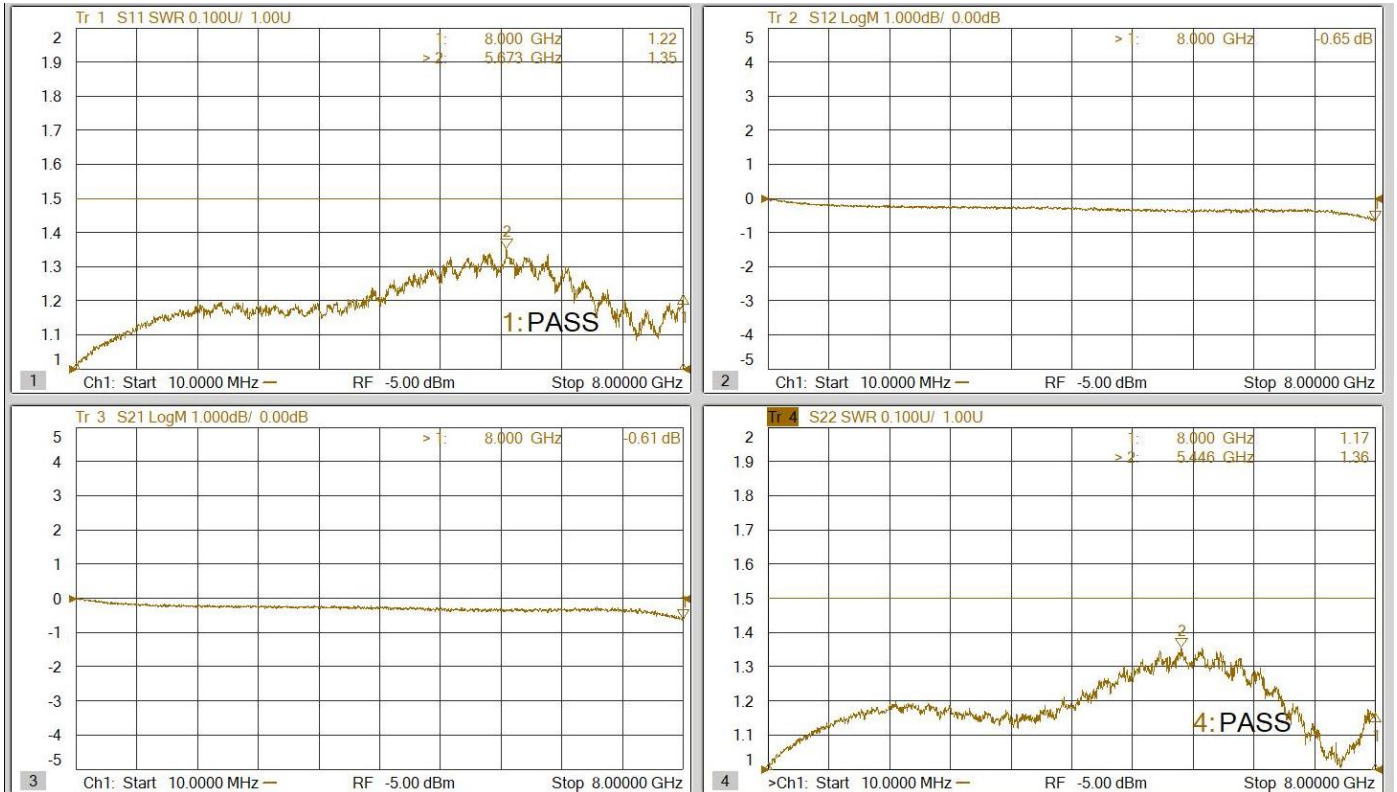
SCALE:

## NOTES

1. ALL SPECIFICATIONS ARE SUBJECT TO CHANGE WITHOUT NOTICE AT ANY TIME
2. CUSTOMER OUTLINE DRAWING FOR REFERENCE ONLY

# Typical Test Result

PART NUMBER	DESCRIPTION
MVE1971H-A1-B	SMA Female To MM8430 Test Probes(Pin:A3.5mm), DC-8GHz, positioning hole: O1.05



## NOTES

1. ALL SPECIFICATIONS ARE SUBJECT TO CHANGE WITHOUT NOTICE AT ANY TIME
2. CUSTOMER OUTLINE DRAWING FOR REFERENCE ONLY