

# COAXIAL ADAPTER

## 1.0mm-1.0mm Precision Series

### Features

- ✓ Frequency up to 110GHz
- ✓ High performance design
- ✓ Low VSWR

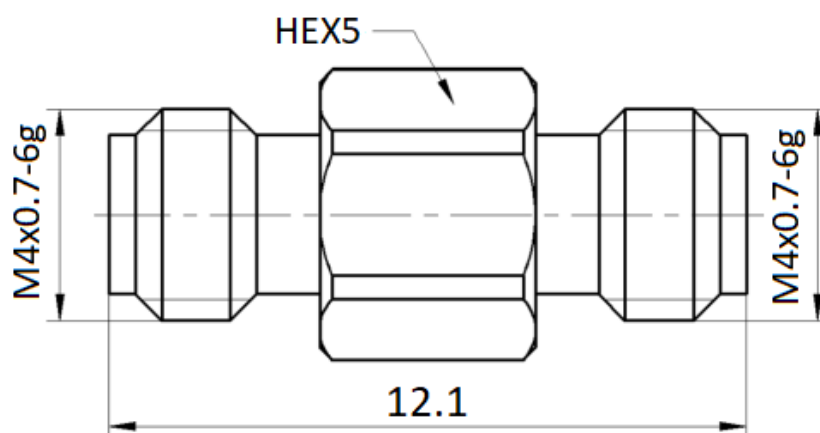


### Specifications:

<b>PART NUMBER</b>	<b>MVE1128</b>
<b>DESCRIPTION</b>	1.0mm Female To 1.0mm Female, 110GHz Adapter/ Stainless
<b>ELECTRICAL</b>	FREQUENCY: DC-110GHz IMPEDANCE: 50Ω VSWR: 1.5:1 MAX. INSERTION LOSS: <math><0.06 \cdot \sqrt{f(\text{GHz})}</math> dB
<b>MATERIALS</b>	BODY: STAINLESS STEEL, PASSIVATED INNER CONDUCTOR: BERYLLIUM COPPER, GOLD PLATED INSULATOR: PEI

Tolerance:  $\pm 0.5\text{mm}$

### Outline Drawing (Unit: mm)



NOTES:

1. ALL SPECIFICATIONS ARE SUBJECT TO CHANGE WITHOUT NOTICE AT ANY TIME
2. CUSTOMER OUTLINE DRAWING FOR REFERENCE ONLY

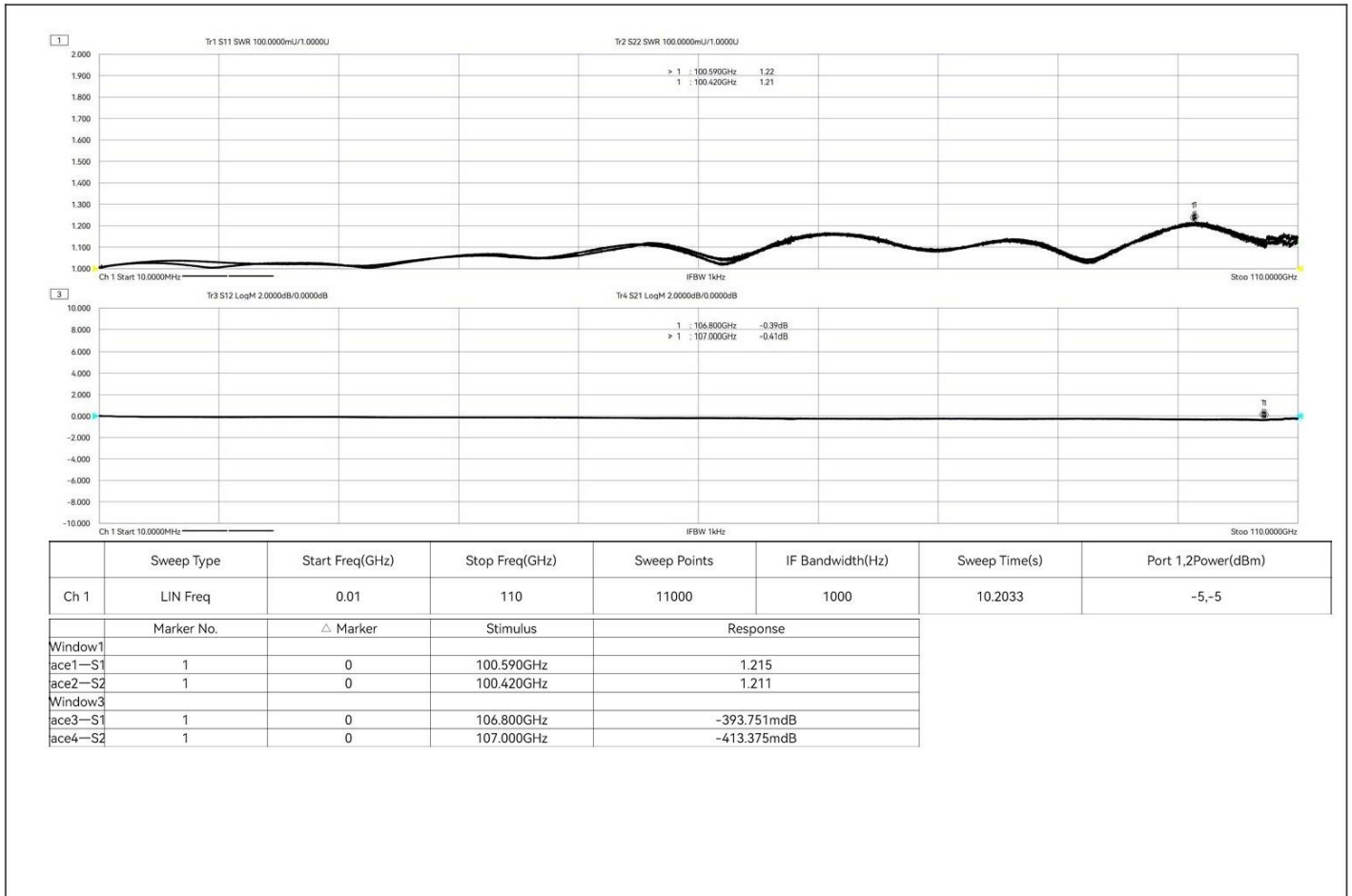




芝程科技有限公司  
Marvelous Microwave Inc.

---

## Typical Test Result (MVE1120+MVE1127)



NOTES:  
1. ALL SPECIFICATIONS ARE SUBJECT TO CHANGE WITHOUT NOTICE AT ANY TIME  
2. CUSTOMER OUTLINE DRAWING FOR REFERENCE ONLY

