

## ELECTRICAL DATA

FREQUENCY : DC-8GHz

IMPEDANCE: 50Ω

VSWR: 1.3:1 MAX.(DC-3GHz) 1.5:1 MAX.(DC3~8GHz)

INSULATION RESISTANCE: 1000 Mega-Ohms

DIELECTRIC WITHSTANDING VOLTAGE: 250Vrms

CENTER CONTACT RESISTANCE: 10.0 Mini-Ohms

OUTER CONTACT RESISTANCE: 6.0 Mini-Ohms

## MECHANICAL DATA

COUPLING METHOD: FLOATING/SNAP-ON

TEMPERATURE RANGE: -65~165°C

CENTER CONTACT FORCE:20g~110g

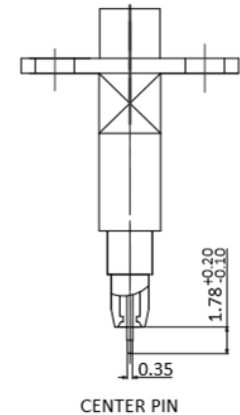
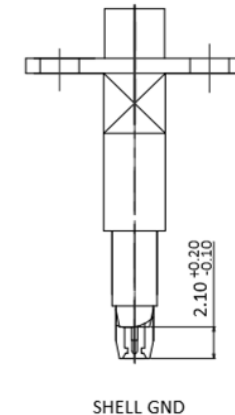
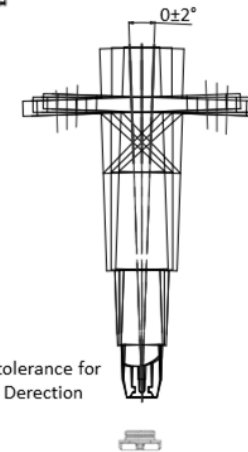
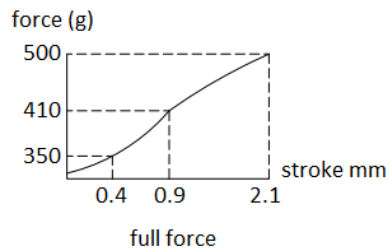
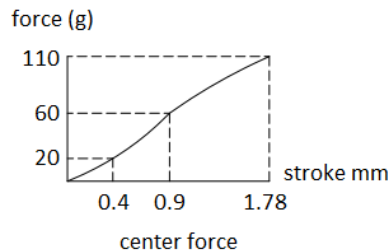
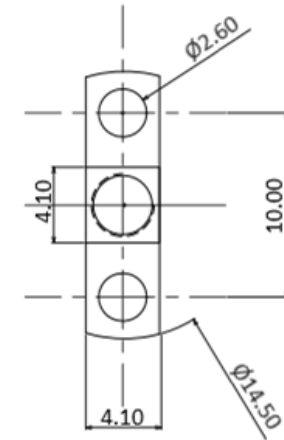
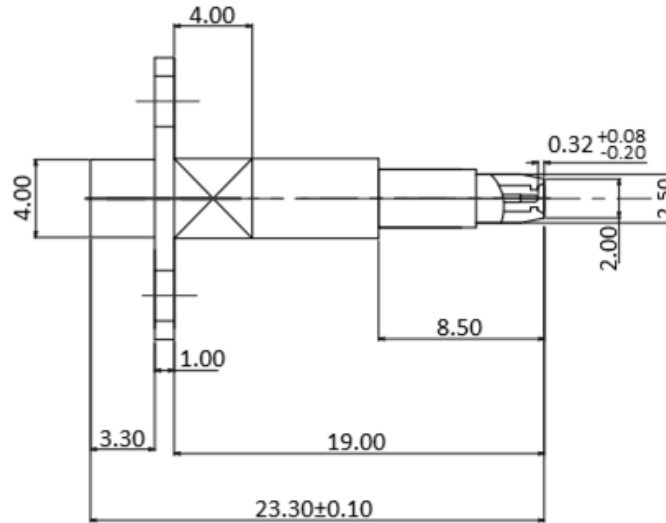
GROUND CONTACT FORCE:90g~500g

DURABILITY:MMCX-500 CYCLES MIN.

MM8030-10K CYCLES MIN.

## APPLICATION

Fully mating with MM8030



EFFECTIVE STROKE

DESCRIPTION	MATERIALS	ROHS COMPLIANCE	UNIT: mm
BODY	BRASS,GOLD PLATED	TOLERANCE: X=±2.0 X.X=±1.0 X.XX=±0.5	
INNER SHELL	BRASS,GOLD PLATED	TITLE MMCX Female To MM8030 Adapter, DC-8GHz	
SPRING	SUS304		
INNER INSULATOR	TEFLON		

**MVE** 芝程科技有限公司  
www.micro-mve.com

DC-67GHz RF& Microwave Components

PART NO.	MVE1999-1.35	REV	4.1
----------	--------------	-----	-----

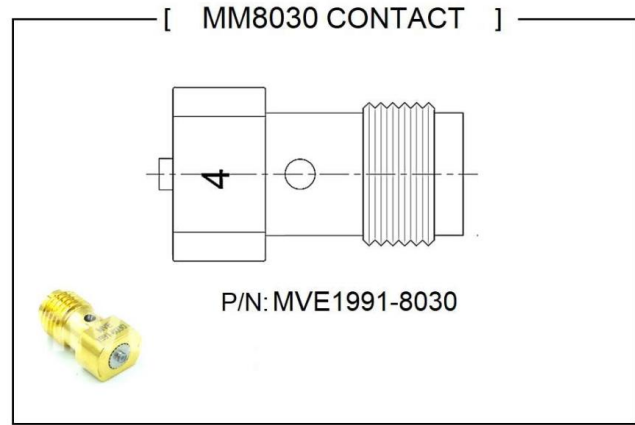
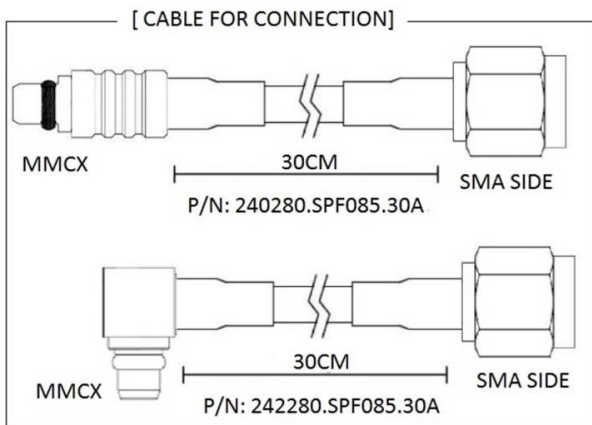
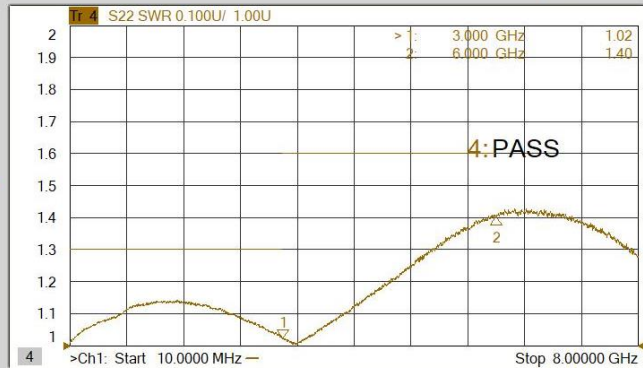
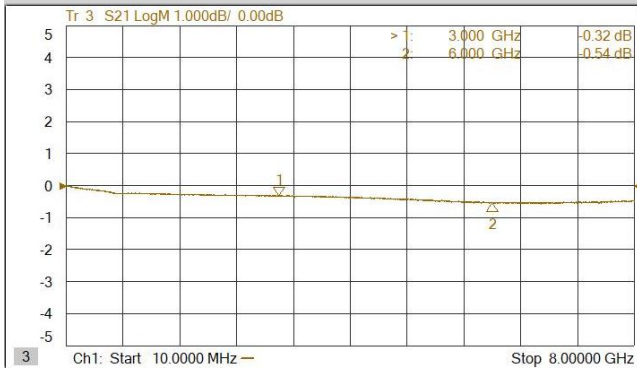
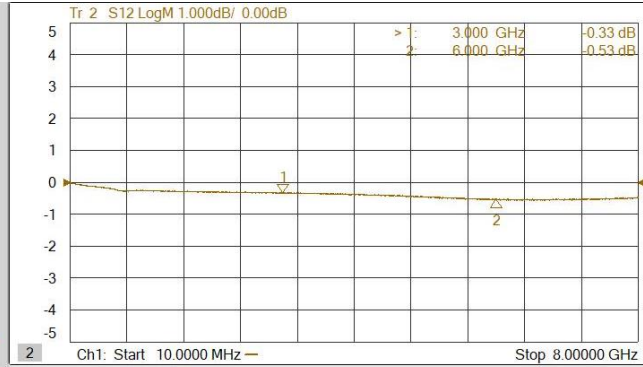
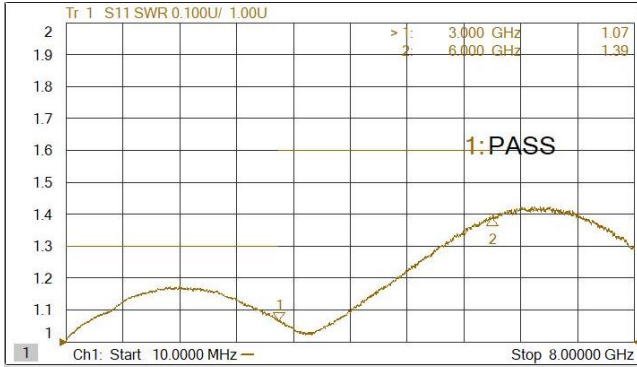
SIZE: A SHEET: 1/1 SCALE:

## NOTES

1. ALL SPECIFICATIONS ARE SUBJECT TO CHANGE WITHOUT NOTICE AT ANY TIME
2. CUSTOMER OUTLINE DRAWING FOR REFERENCE ONLY

# Typical Test Result

PART NUMBER	DESCRIPTION
MVE1999-1.35	MMCX Female To MM8030 Probe Adapter ,DC-8GHz



## NOTES

1. ALL SPECIFICATIONS ARE SUBJECT TO CHANGE WITHOUT NOTICE AT ANY TIME
2. CUSTOMER OUTLINE DRAWING FOR REFERENCE ONLY