

ELECTRICAL DATA

FREQUENCY : DC-8GHz

IMPEDANCE: 50Ω

VSWR:1.3:1 MAX. (DC-3GHz) / 1.5:1 TYP. (3-8GHz)

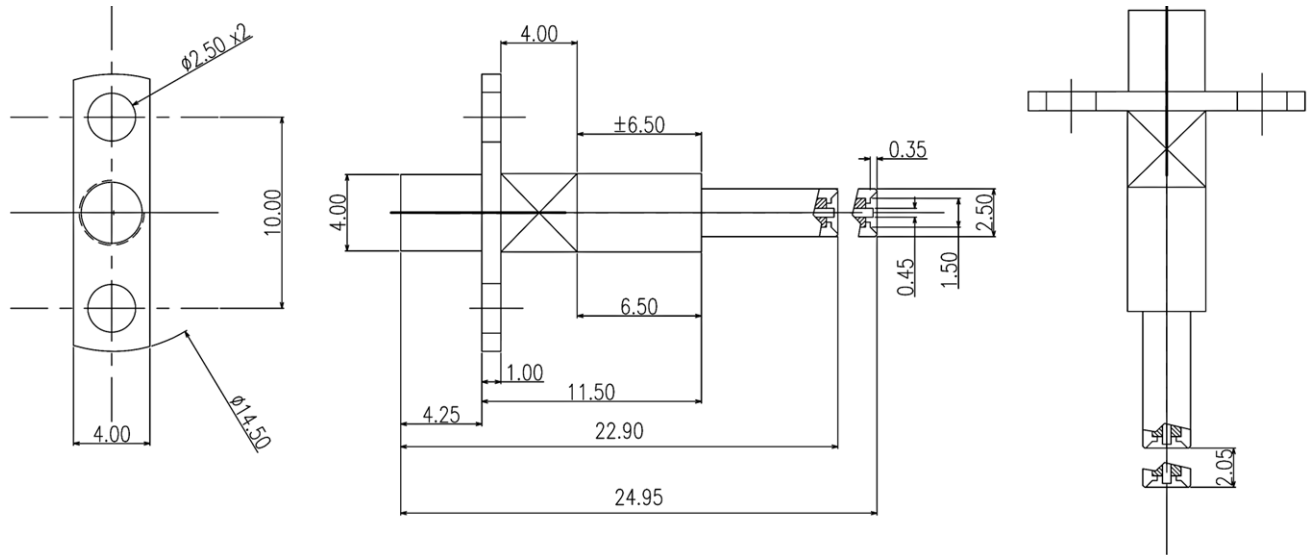
INSERTION LOSS: ≤ 1.0 dB

MECHANICAL DATA

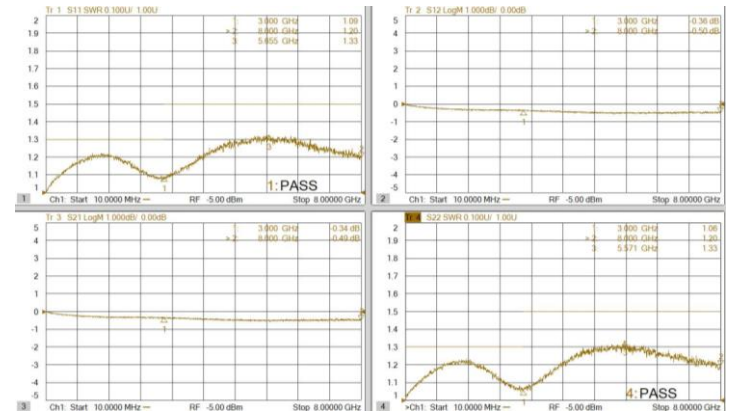
DURABILITY(MATING/UNMATING): 30K Cycles

APPLICATION

Fully mating with MHF4.



Typical Test Result



DESCRIPTION	MATERIALS	ROHS COMPLIANCE	UNIT: mm
SPRING	SUS304, NICKEL PLATED	TOLERANCE: X=±0.38 X.X=0.25 X.XX=±0.15	
CENTER	BRASS, GOLD PLATED	TITLE	
BODY CONTACT	BRASS, GOLD PLATED	MMCX Female To MHF4 Probe Adapter, DC-8GHz	
BODY	BRASS, NICKEL PLATED		

NOTES

1. ALL SPECIFICATIONS ARE SUBJECT TO CHANGE WITHOUT NOTICE AT ANY TIME
2. CUSTOMER OUTLINE DRAWING FOR REFERENCE ONLY

MVE Microwave 芝程科技有限公司

www.micro-mve.com

DC-67GHz RF& Microwave Components

PART NO.	MVE1967C	REV	1.1
SIZE: A	SHEET: 1/1	SCALE:	