

DIOPLE ANTENNA

Indoor Antenna

Features

- ✓ Frequency up to 7.125 GHz
- ✓ 3dBi High Gain Performance
- ✓ Low VSWR

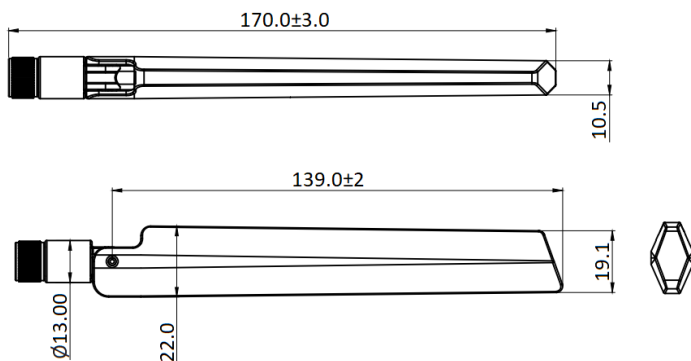


Specifications:

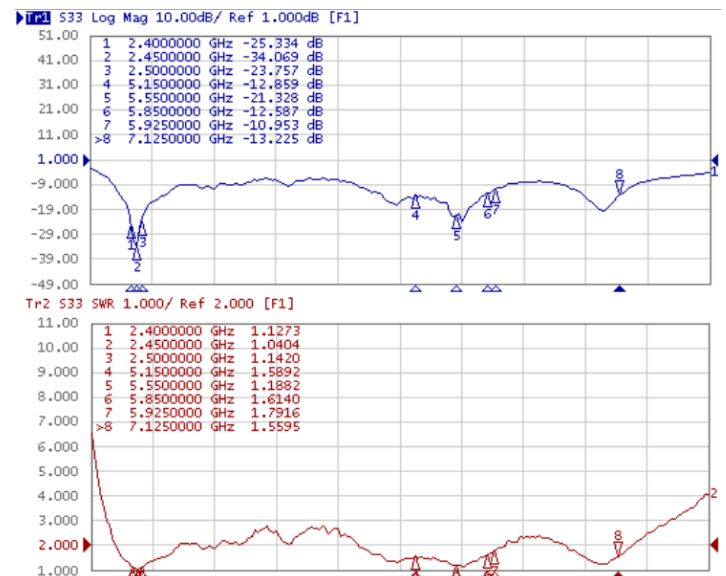
PART NUMBER	MANT-2400.7150.D3
DESCRIPTION	WiFi6E Antenna 2400-2500/5150-5850/5925-7125 3dBi, SMA Male
ELECTRICAL	MECAHNICAL
FREQUENCY: 2400-2500MHz/5150-5850MHz/ 5925-7125MHz VSWR: ≤2.0 @ 2400 ~ 2500MHz ≤2.0 @ 5150 ~ 5850MHz ≤2.0 @ 5925MHz ≤2.0 @ 7125MHz PEAK GAIN: 3 ~ 4dBi POLARIZATION: Linear IMPEDANCE: 50 Ohm	RADIATOR MATERIAL: PCB CONNECTOR: SMA Male DIMENSION: 170.0mm±3mm OPERATING TEMP: -40°C~+70°C STORAGE TEMP: -40°C~+80°C

Tolerance: X.X= ±0.5 X.XX=: ±0.2

Outline Drawing (mm):



Typical Test Result

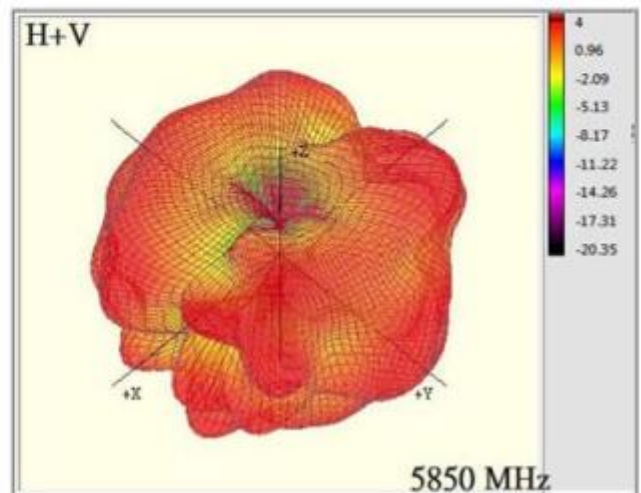
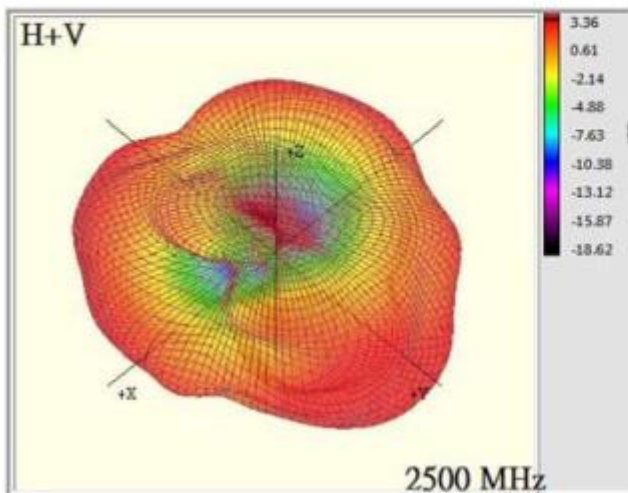
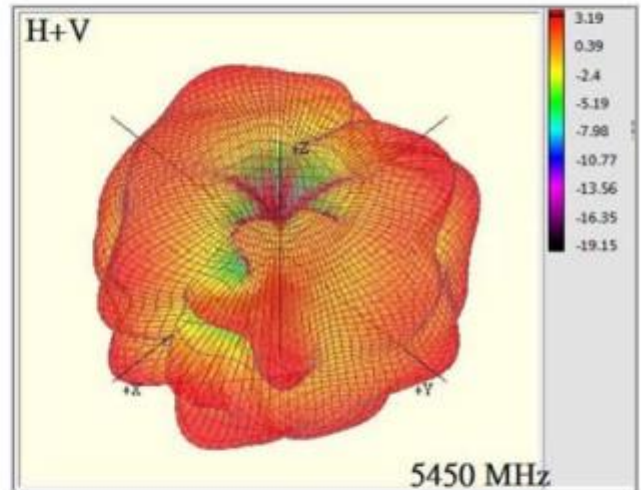
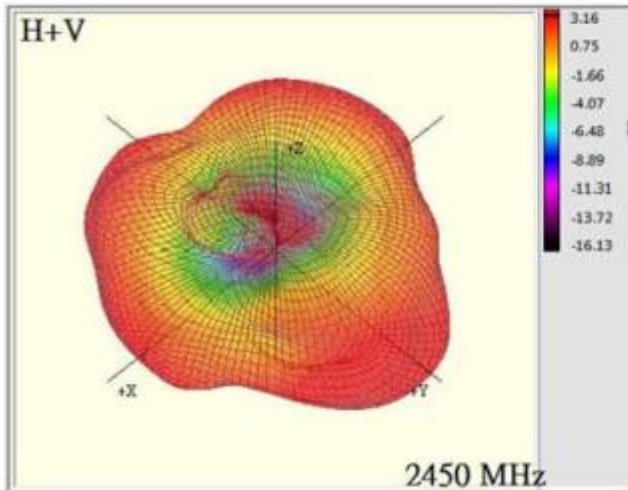
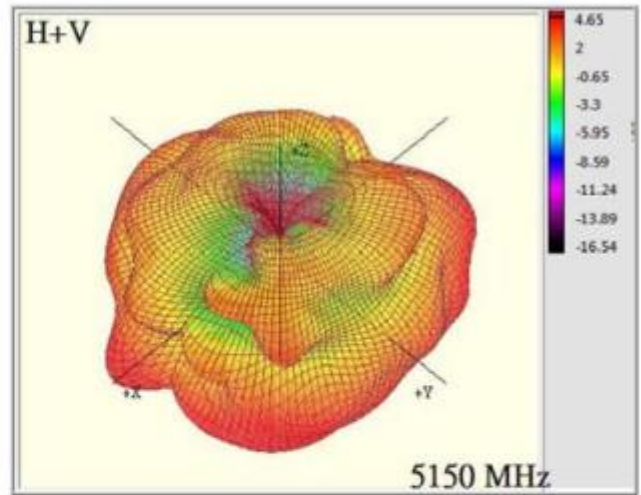
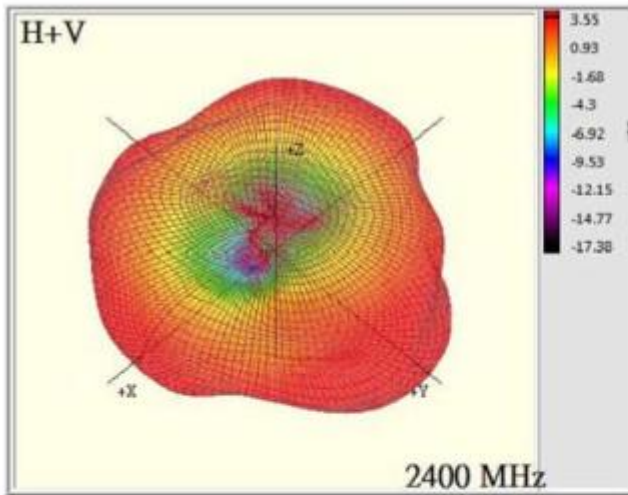


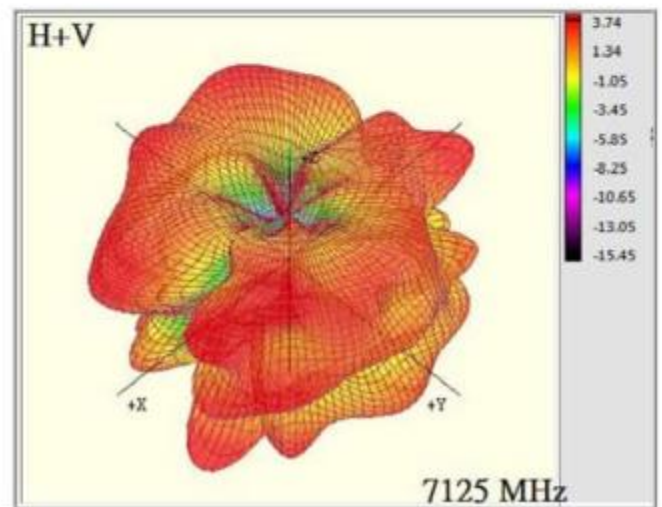
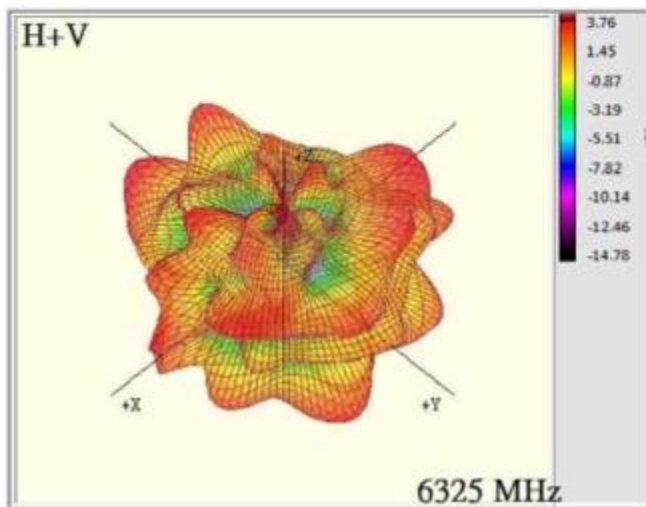
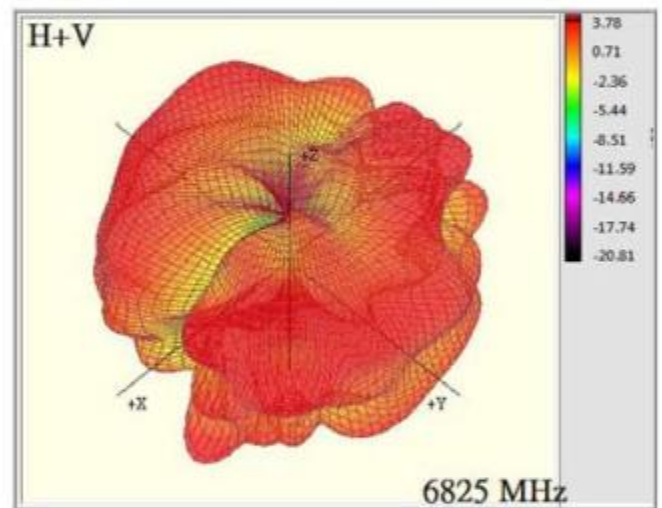
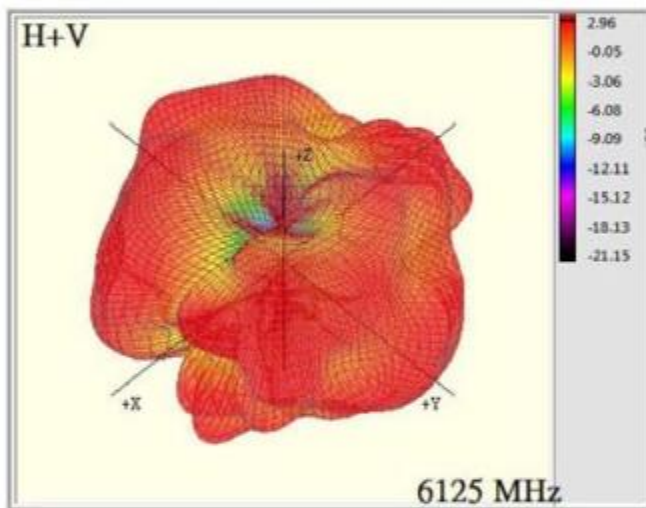
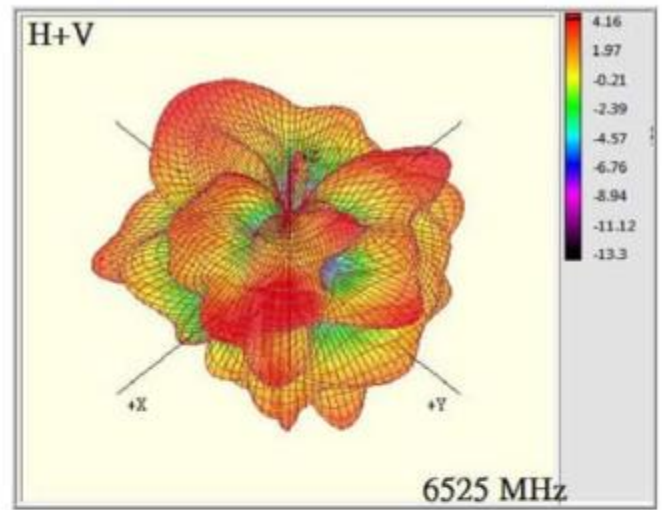
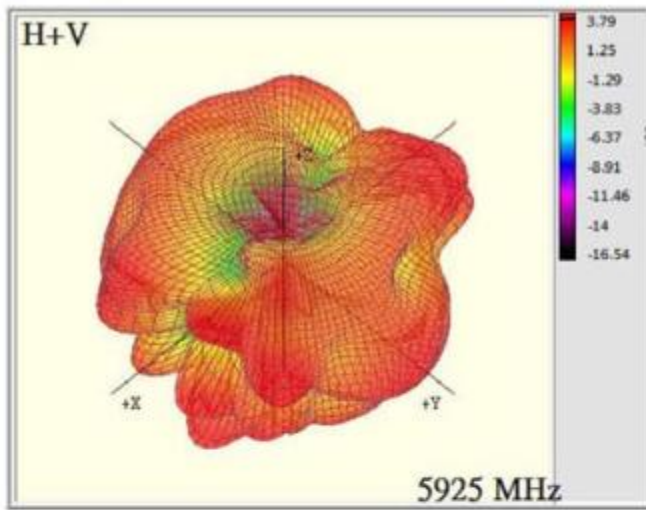
NOTES:

1. ALL SPECIFICATIONS ARE SUBJECT TO CHANGE WITHOUT NOTICE AT ANY TIME
2. CUSTOMER OUTLINE DRAWING FOR REFERENCE ONLY



Pattern





Gain and Efficiency

Frequency (MHz)	2400	2450	2500	5150	5450	5850
Tot. Rad. Pwr. (dBi)	-0.961	-1.583	-1.722	-1.163	-1.593	-1.168
Peak EIRP (dBi)	3.459	3.018	3.088	4.197	2.522	4.002
Directivity (dBi)	4.42	4.601	4.809	5.36	4.115	5.17
Efficiency (dB)	-0.961	-1.583	-1.722	-1.163	-1.593	-1.168
Efficiency (%)	80.148	69.455	67.273	76.498	69.294	76.426
Gain (dBi)	3.459	3.018	3.088	4.197	2.522	4.002

Frequency (MHz)	5925	6125	6325	6525	6825	7125
Tot. Rad. Pwr. (dBi)	-1.636	-2.335	-2.804	-2.47	-2.103	-1.979
Peak EIRP (dBi)	3.751	2.867	3.716	4.12	2.957	2.94
Directivity (dBi)	5.388	5.202	6.52	6.59	5.06	4.919
Efficiency (dB)	-1.636	-2.335	-2.804	-2.47	-2.103	-1.979
Efficiency (%)	68.608	58.41	52.433	56.624	61.613	63.405
Gain (dBi)	3.751	2.867	3.716	4.12	2.957	2.94