

ELECTRICAL DATA

FREQUENCY : DC-11GHz

IMPEDANCE: 50Ω

VSWR:1.6:1 MAX. (DC-3GHz) / 1.8:1 MAX. (3-6GHz) / 2.2:1 MAX. (6-11GHz)

INSULATION RESISTANCE: 500Mega-Ohms

DIELECTRIC WITHSTANDING VOLTAGE: 250Vrms

CENTER CONTACT RESISTANCE: 70 Mini-Ohms

OUTER CONTACT RESISTANCE: 20 Mini-Ohms

MECHANICAL DATA

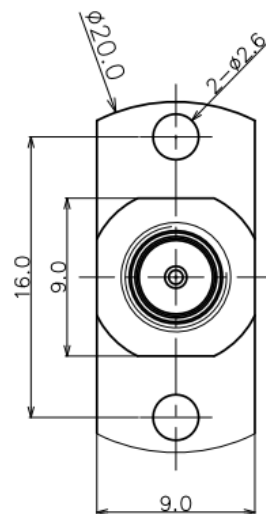
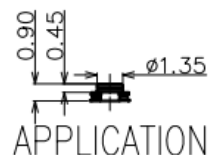
COUPLING METHOD: FLOATING/THREADED

TEMPERATURE RANGE: -40~85°C

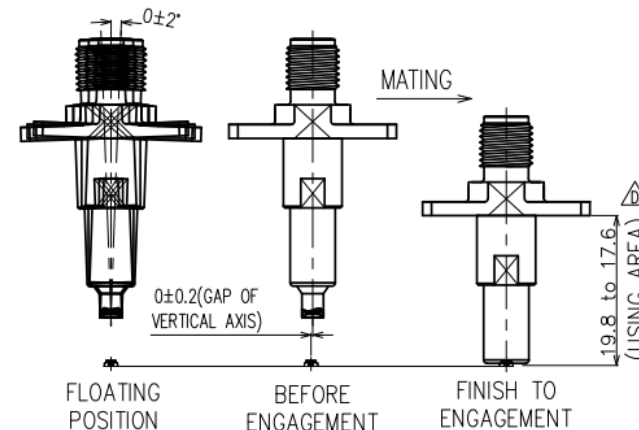
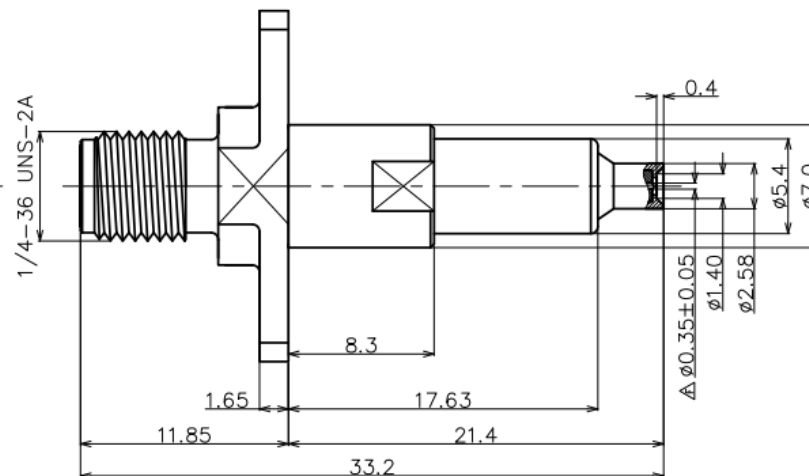
DURABILITY:10000 CYCLES MIN.

APPLICATION


Fully mating with MM8030



1/4-36 UNS-2A



| DESCRIPTION | MATERIALS | ROHS COMPLIANCE | UNIT: mm |
|-----------------|--------------------------|---|----------|
| BODY | BRASS,NICKLE/GOLD PLATED | TOLERANCE: X=±0.38 X.X=±0.25 X.XX=±0.15 | |
| CENTER CONTACT | BRASS/PHOSPHOR BRONZE | TITLE SMA Female To MM8030 Adapter, DC-11GHz | |
| SPRING | PIANO WIRE/NUCKLE PLATED | | |
| INNER INSULATOR | TEFLON | | |

| | | |
|--|------------|--------|
|  芝程科技有限公司 www.micro-mve.com DC-67GHz RF& Microwave Components | | |
| PART NO. | | REV |
| MVE1961-2 | | 2.0 |
| SIZE: A | SHEET: 1/1 | SCALE: |

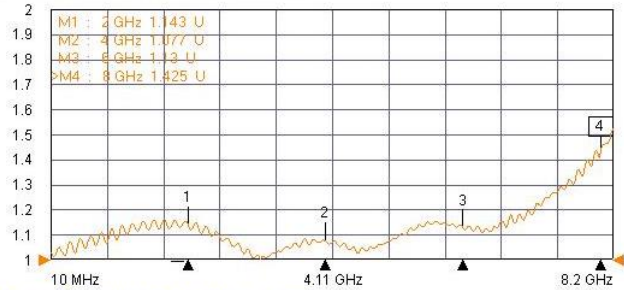
NOTES

1. ALL SPECIFICATIONS ARE SUBJECT TO CHANGE WITHOUT NOTICE AT ANY TIME
2. CUSTOMER OUTLINE DRAWING FOR REFERENCE ONLY

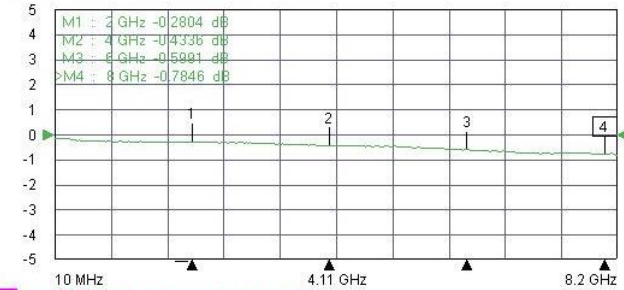
Typical Test Result

| PART NUMBER | DESCRIPTION |
|-------------|---------------------------------------|
| MVE1961-2 | SMA Female To MM8030 Adapter, DC-8GHz |

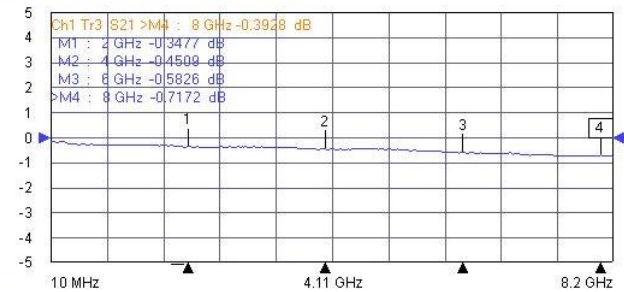
Tr1 S11 Refl SWR RefLvl: 1 U Res: 100 mU/Div



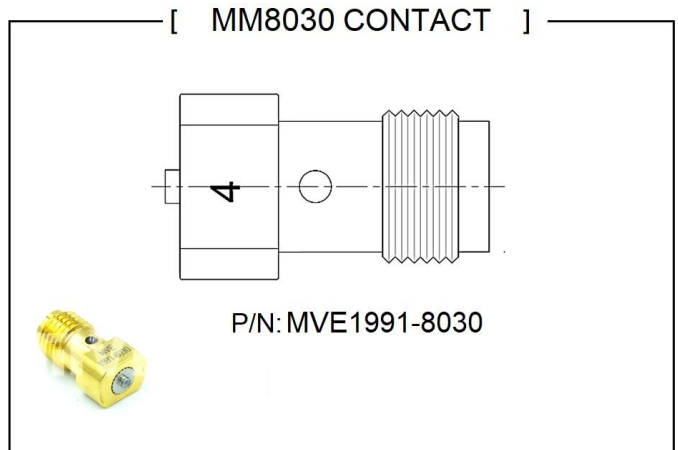
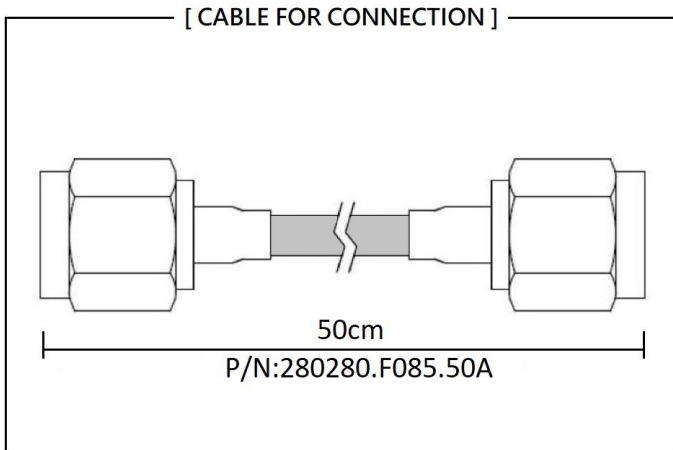
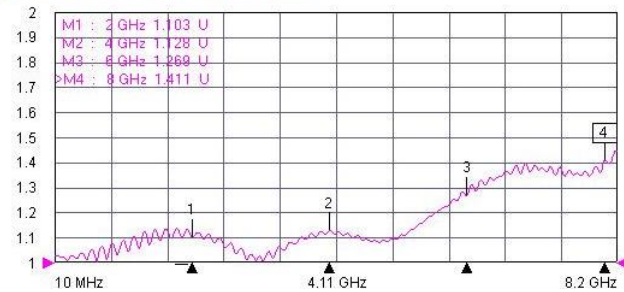
Tr2 S12 Trans LogM RefLvl: 0 dB Res: 1 dB/Div



Tr3 S21 Trans LogM RefLvl: 0 dB Res: 1 dB/Div



Tr4 S22 Refl SWR RefLvl: 1 U Res: 100 mU/Div



NOTES

1. ALL SPECIFICATIONS ARE SUBJECT TO CHANGE WITHOUT NOTICE AT ANY TIME
2. CUSTOMER OUTLINE DRAWING FOR REFERENCE ONLY