

DC BLOCK

SMA Series
0.01-18GHz

Features

- ✓ Frequency up to 18 GHz
- ✓ 200V Protect DC Block
- ✓ Low VSWR & Insertion Loss

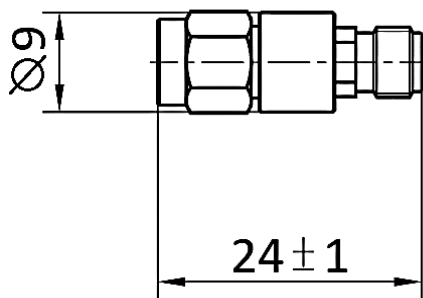


Specifications

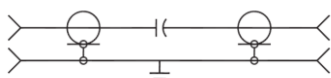
PART NUMBER	MVE6114
DESCRIPTION	SMA M/F Inner 200V DC Block, 0.01-18GHz Stainless
ELECTRICAL	MATERIALS
FREQUENCY : 0.01-18GHz IMPEDANCE: 50ohm INSERTION LOSS: 0.7dB MAX. VSWR: 1.30:1MAX. WORKING VOLTAGE: 200V OPERATING TEMPERATURE: -55°C~+ 100°C	CONNECTOR: STAINLESS STEEL, PASSIVATED CONDUCTORS: BERYLLIUM COPPER, GOLD PLATED

Tolerance: ±0.1mm

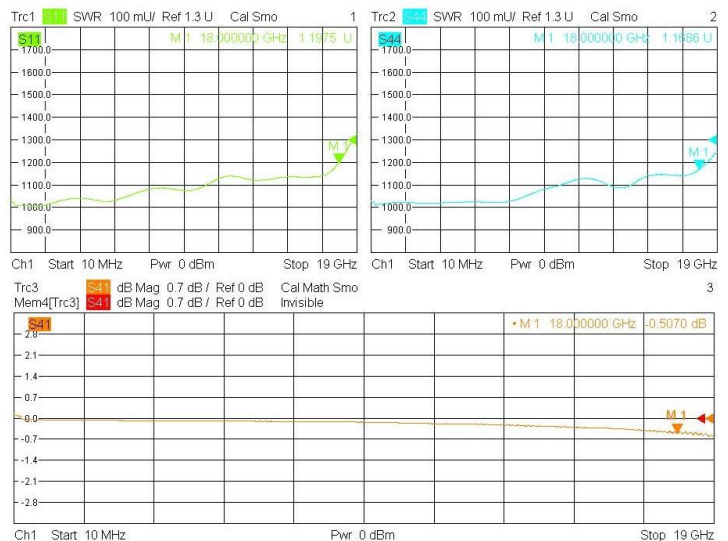
Outline Drawing (Unit: mm)



Electrical Schematic



Typical Test Result



NOTES:

1. ALL SPECIFICATIONS ARE SUBJECT TO CHANGE WITHOUT NOTICE AT ANY TIME
2. CUSTOMER OUTLINE DRAWING FOR REFERENCE ONLY

