

## ELECTRICAL DATA

FREQUENCY: DC-12GHz

IMPEDANCE: 50Ω

VSWR: 1.5:1@DC-12GHz

INSULATION RESISTANCE: 1000Mega-ohms

DIELECTRIC WITHSTANDING: 250Vrms

CENTER CONTACT RESISTANCE:

[20+L(mm)\*0.5] Mini-Ohms

OUTER CONTACT RESISTANCE:

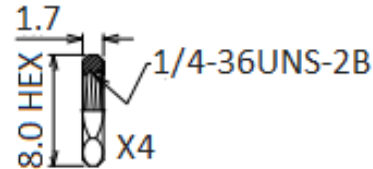
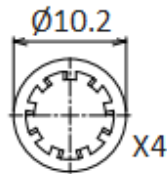
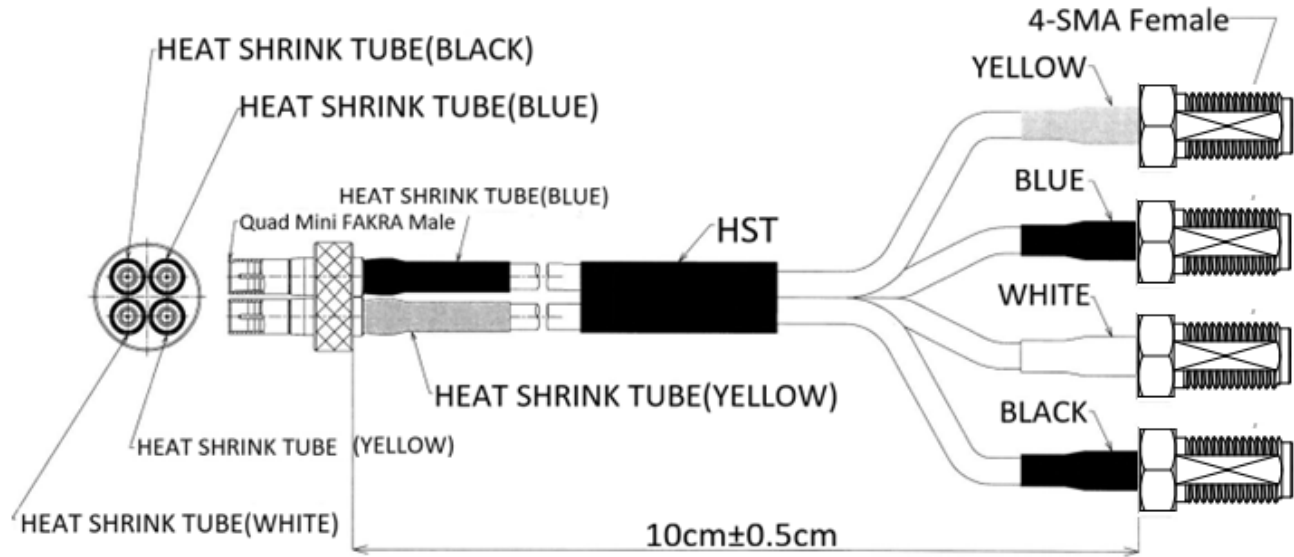
[12+L(mm)\*0.5] Mini-Ohms

## MECHANICAL DATA

COUPLING METHOD: SNAP ON

DURABILITY(MATING/UNMATING): 500 CYCLES

## ROHS COMPLIANCE



DESCRIPTION	MATERIALS	ROHS COMPLIANCE	UNIT: mm
MINI FAKRA	BRASS,NICKEL/GOLD PLATED	TOLERANCE: X=±0.38 X.X=±0.25 X.XX=±0.15	
SMA FEMALE	BRASS, NICKEL/GOLD PLATED	TITLE Quad SMA Female BH To Quad Mini FAKRA Male(2x2) , DC-12GHz,Flexible 085 Blue /	
INSULATOR	TEFLON	L:10cm	

### NOTES

1. ALL SPECIFICATIONS ARE SUBJECT TO CHANGE WITHOUT NOTICE AT ANY TIME
2. CUSTOMER OUTLINE DRAWING FOR REFERENCE ONLY

**MVE** 芝程科技有限公司  
Microwaves

[www.micro-mve.com](http://www.micro-mve.com)

DC-67GHz RF& Microwave Components

PART NO.	<b>MAC296800.F085.10AQ</b>	REV 2.0
SIZE: A	SHEET: 1/1	SCALE: