

# WAVEGUIDE TERMINATION

WR51

## Features

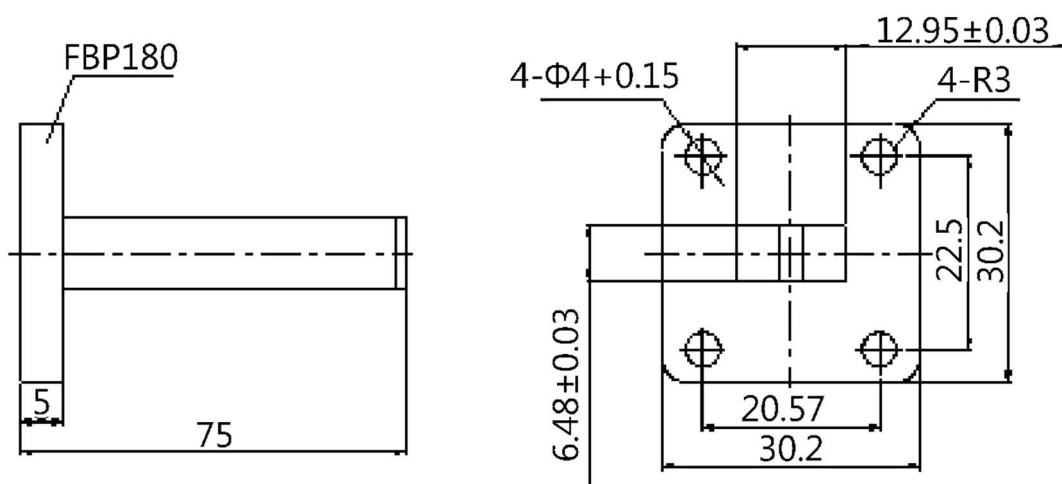
- ✓ Frequency Range: 14.5-22GHz
- ✓ WR51 waveguide design
- ✓ High Performance

## Specifications

<b>PART NUMBER</b>	MWTR9003
<b>DESCRIPTION</b>	WR51, 14.5-22GHz Waveguide Termination, Average Power 2W
<b>ELECTRICAL</b>	<b>MATERIALS</b>
FREQUENCY : 14.5-22GHz WAVEGUIDE: WR51 VSWR: 1.1:1 Max. FLANGE: FBP180 POWER HANDLING(Avg.): 2W	BODY: COPPER, BRASS INSIDE FINISH: SILVER PLATING OUTSIDE FINISH: ANTICORROSION GREY PAINT TEMPERATURE RANGE:-40°C - +70°C

Tolerance:±0.3mm

## Outline Drawing (Unit: mm)



### NOTES:

1. ALL SPECIFICATIONS ARE SUBJECT TO CHANGE WITHOUT NOTICE AT ANY TIME
2. CUSTOMER OUTLINE DRAWING FOR REFERENCE ONLY

