

SWITCH

SPDT

LATCHINGFUNCTION

Features

- ✓ Low VSWR
- ✓ Frequency up to 18GHz
- ✓ High Life Cycles

PART NUMBER	PART NUMBER	PART NUMBER
MVE9214	MVE9214-24	MVE9214-28
DC 12V	DC 24V	DC 28V

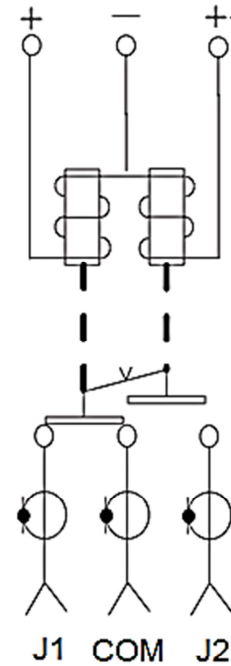
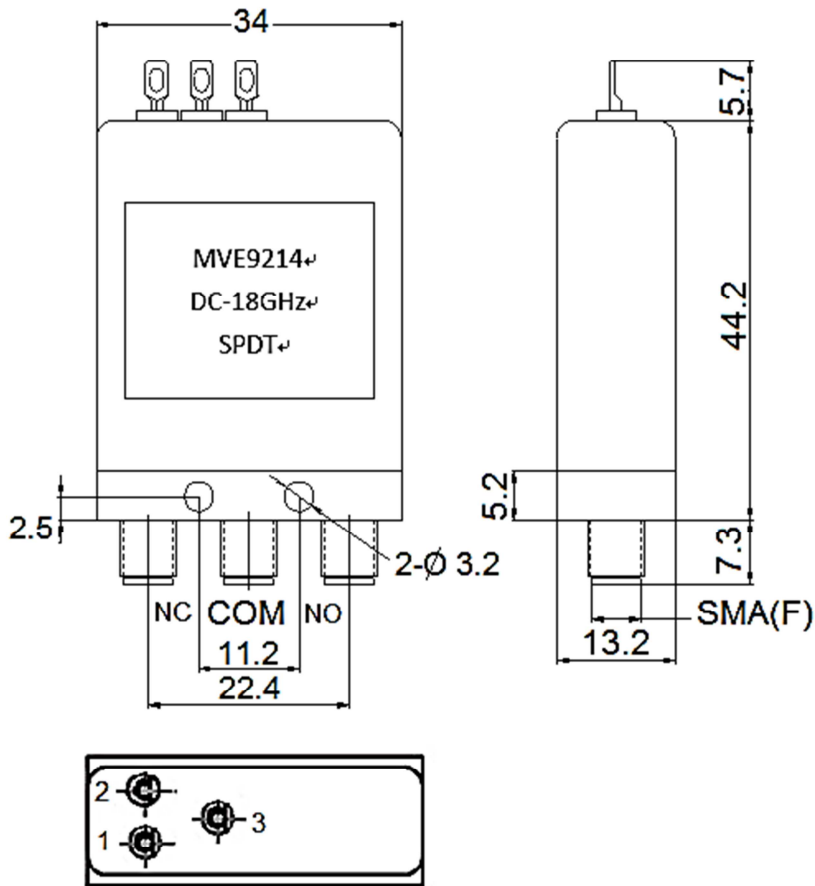
SPECIFICATIONS

RF CHARACTERISTICS					
FREQUENCY RANGE	0-2GHz	2-4GHz	4-8GHz	8-12GHz	12-18GHz
VSWR MAX.	1.15:1	1.20:1	1.30:1	1.40:1	1.50:1
INSERTION LOSS MAX.	0.20dB	0.20dB	0.25dB	0.35dB	0.40dB
ISOLATION MIN.	90dB	80dB	75dB	65dB	60dB
AVERAGE POWER AT COOL SWITCHING	10WATTS				
ELECTRICAL CHARACTERISTICS					
ACTUATOR	Latching				
COIL CURRENT	150mA/DC 12V 80mA/DC 24V Option 70mA/DC 28V Option				
DRIVE VOLTAGE	2.5-5V				
DRIVE CURRENT	0.02-0.8mA				
MECHANICAL CHARACTERISTICS					
CONNECTORS	SMA Female				
LIFE CYCLES	1,000,000				
SWITCHING SPEED	15ms TYP.				
WEIGHT	38g				
ENVIRONMENTAL CHARACTERISTICS					
OPERATING TEMPERATURE	-20°C+65°C				
STORAGE TEMPERATURE	-25°C+65°C				

Tolerance: ±2%

Outline Drawing: (mm)

Electrical Schematic:



Logic Figure:

RF interface\Control	1 (-)	2 (+)	3 (+)
NC-COM ON	GND	0V	+12V
NO-COM ON	GND	+12V	0V

NOTES:

1. ALL SPECIFICATIONS ARE SUBJECT TO CHANGE WITHOUT NOTICE AT ANY TIME
2. CUSTOMER OUTLINE DRAWING FOR REFERENCE ONLY

