

SWITCH

MVE9115L

DPDT

Latching Self Cut-off TTL

Features

- ✓ Frequency up to 40 GHz
- ✓ Low Insertion Loss
- ✓ High Life Cycles

SPECIFICATIONS:

RF CHARACTERISTICS				
Frequency Range	6GHz	18GHz	26GHz	40GHz
VSWR MAX.	1.20:1	1.40:1	1.70:1	1.80:1
Insertion Loss MAX.	0.20dB	0.40dB	0.70dB	0.90dB
Isolation MIN.	70dB	60dB	55dB	50dB
Repeatability	0.1dB			
ELECTRICAL CHARACTERISTICS				
Actuator	Latching Self Cut-off			
Actuator voltage(V)	DC 24V/190mA			
Impedance	50ohms			
Switching Time	<15ms			
MECHANICAL CHARACTERISTICS				
Housing	Stainless steel passivated			
Humidity	5%~85%			
Shock(nonoperating)	50G,1/2Sine,12msec			
Vibration(operating)	10GRMS,20-2000HZ			
CONNECTORS	2.92 mm			
Actuator lifespan	2 million(MIN.)			
WEIGHT	180g			
ENVIRONMENTAL CHARACTERISTICS				
OPERATING TEMPERATURE	-25°C~+80°C			
STORAGE TEMPERATURE	-55°C~+85°C			

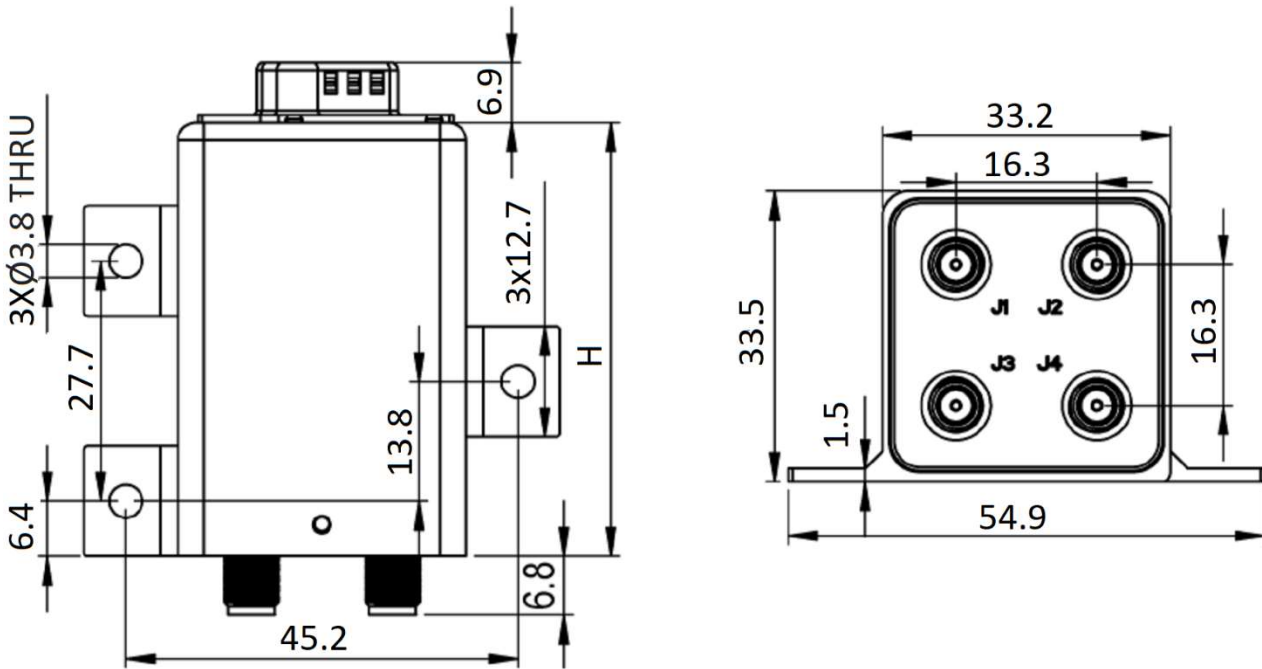
NOTES:

1. ALL SPECIFICATIONS ARE SUBJECT TO CHANGE WITHOUT NOTICE AT ANY TIME
2. CUSTOMER OUTLINE DRAWING FOR REFERENCE ONLY

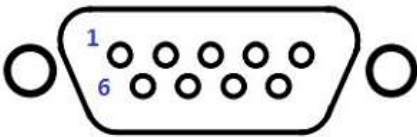


Tolerance: X= ±0.5

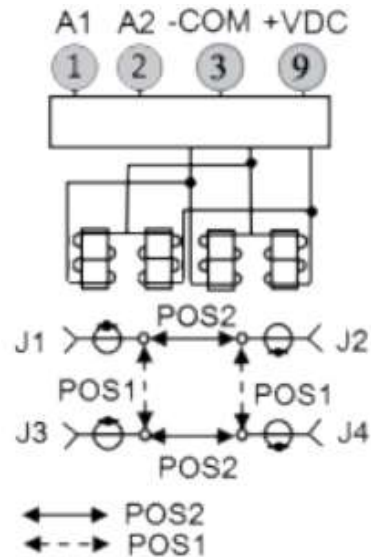
Outline Drawing (Unit: mm)



Electrical Schematic:



PinNo.	Latching TTL
1	T1 (NO:J1-J3;J2-J4)
2	T2 (NO:J1-J2;J3-J4)
3	COM(-)
4	Unused
5	Ind.1 (NO:J1-J3;J2-J4)
6	Ind.2 (NO:J1-J2;J3-J4)
7	COM(-)Ind.
8	Unused
9	+VDC/+VDCI



NOTES:

1. ALL SPECIFICATIONS ARE SUBJECT TO CHANGE WITHOUT NOTICE AT ANY TIME
2. CUSTOMER OUTLINE DRAWING FOR REFERENCE ONLY

