

COAXIAL CIRCULATOR

3-6GHz
SMA Series

Features

- ✓ Frequency range cover from 3GHz to 6GHz
- ✓ Small size, SMA female connector In/out
- ✓ Customer specify center frequency and bandwidth



Specifications

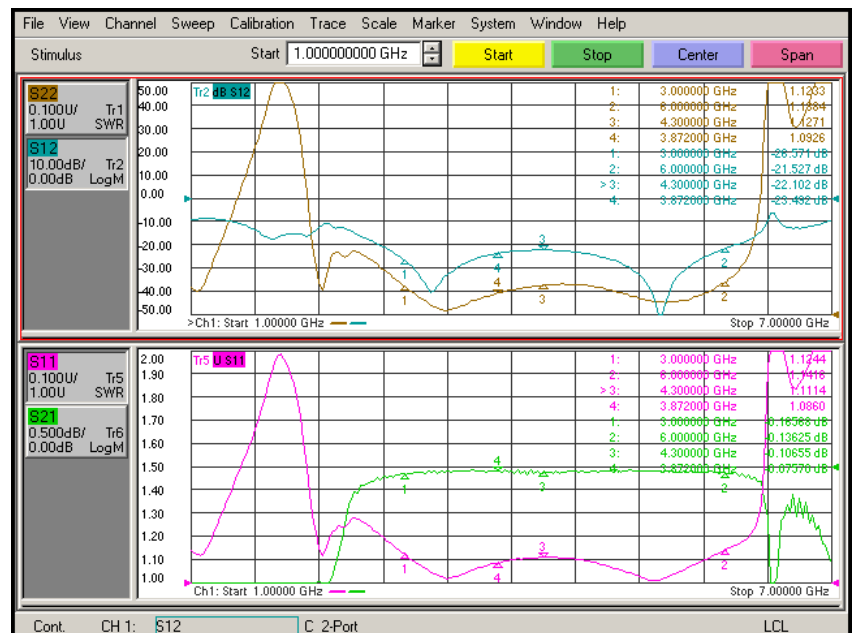
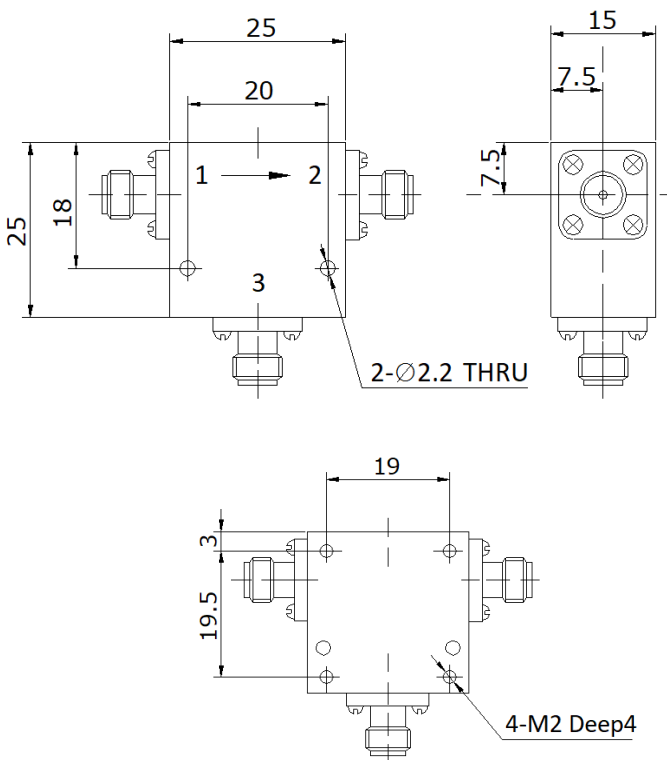
CONNECTOR TYPE: SMA FEMALE
DIRECTION: CLOCKWISE 1→2→3

PART NUMBER	FREQUENCY (GHz)	VSWR	INSERTION LOSS	ISOLATION	POWER HANDLING	TEMPERATURE
MVE7147	3-6	≤ 1.30	≤0.5dB	≥18dB	20W	-10~+60°C

Tolerance:±0.15mm

Outline Drawing (Unit: mm)

Typical Test Report



NOTES:

1. ALL SPECIFICATIONS ARE SUBJECT TO CHANGE WITHOUT NOTICE AT ANY TIME
2. CUSTOMER OUTLINE DRAWING FOR REFERENCE ONLY

