

COAXIAL CIRCULATOR

SMA Series
0.7-1.0GHz

Features

- ✓ Wide frequency range: 76-95MHz full band
- ✓ Low Insertion loss
- ✓ High Isolation

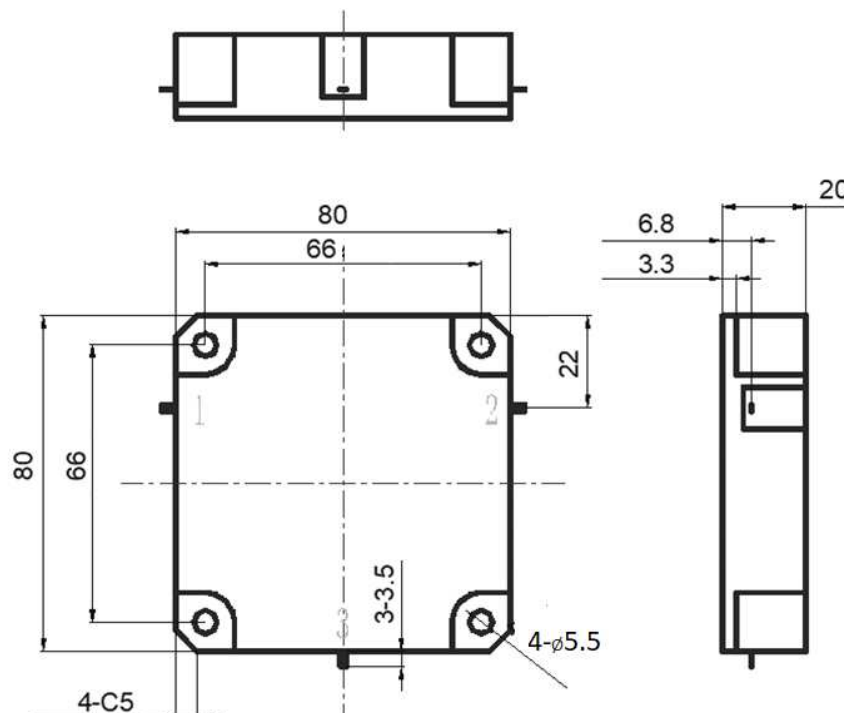
Specifications

Connector: Drop-in Type

PART NUMBER	FREQUENCY (GHz)	VSWR (Max)	INSERTION LOSS	ISOLATION (Min.)	POWER (MAX)	MATERIAL FINISH	TEMPERATURE
MVE7109	76-95 MHz	1.35:1 (TYP)	0.60 dB(TYP)	15dB (MIN)	500W	Aluminum, Nickel Plated	25~+65C (Operational Temp)
		1.45:1 (MAX)	0.65 dB(MAX)	16dB (TYP)			-55~+105C (Storage Temp)

Tolerance:±0.25mm

Outline Drawing (Unit: mm)



NOTES:

1. ALL SPECIFICATIONS ARE SUBJECT TO CHANGE WITHOUT NOTICE AT ANY TIME
2. CUSTOMER OUTLINE DRAWING FOR REFERENCE ONLY



Typical Test Result: (Test Equipment: Keysight / E5071C)

