

# DIRECTIONAL COUPLER

0.5-6GHz  
SMA Series

## Features

- ✓ Frequency Range: 0.5-6GHz
- ✓ High Directivity
- ✓ Low VSWR

## Specifications

FREQUENCY RANGE: 0.5-6 GHz

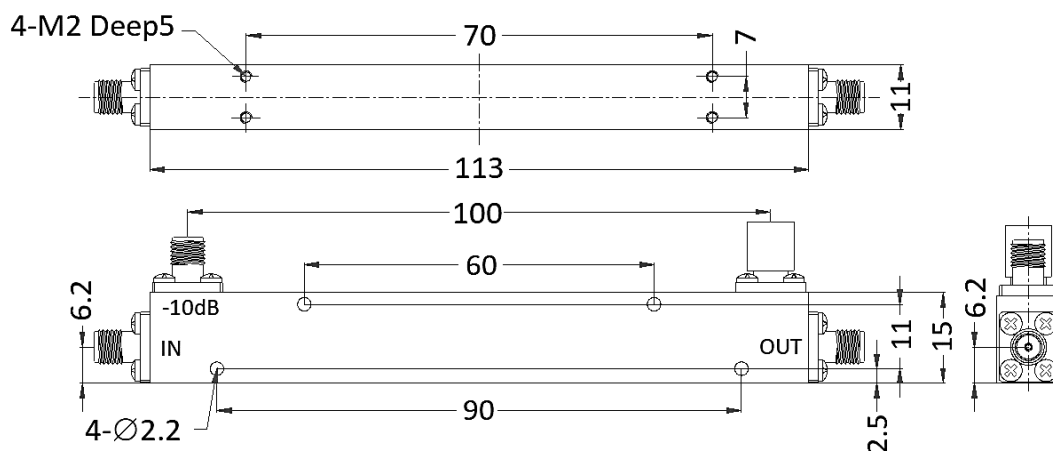
CONNECTOR TYPE: SMA FEMALE

TEMPERATURE RANGE: -40°C TO +80°C

PART NUMBER	NOMINAL COUPLING	COUPLING SENSITIVITY	INSERTION LOSS	DIRECTIVITY	VSWR	FORWARD POWER
MVE4516-XX	20±1dB 30±1dB	≤±1dB	≤0.7dB	≥18dB	1.25:1	60W
	40±1.2dB	≤±1.2dB		≥15dB	1.35:1	

Tolerance: ±0.5mm

## Outline Drawing (Unit: mm)



### NOTES:

1. ALL SPECIFICATIONS ARE SUBJECT TO CHANGE WITHOUT NOTICE AT ANY TIME
2. CUSTOMER OUTLINE DRAWING FOR REFERENCE ONLY

