

Waveguide Fixed Attenuator MVE2856-XX

WR06
110-170GHz

Features

- ✓ Broad Band Coverage
- ✓ Accurate Attenuation Value at Center Frequency
- ✓ Low VSWR

Specifications

PART NUMBER	IMPEDANCE	FREQUENCY	STANDARD VALUE	VSWR	FLANGE TYPE
MVE2856-XX	50 ohm	110-170GHz	3, 6, 10, 20, 30	1.30:1 MAX.	UG-387/U

-XX: Insert dB value desired

POWER HANDLING

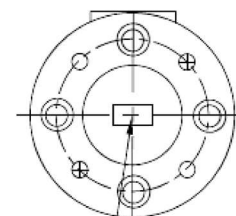
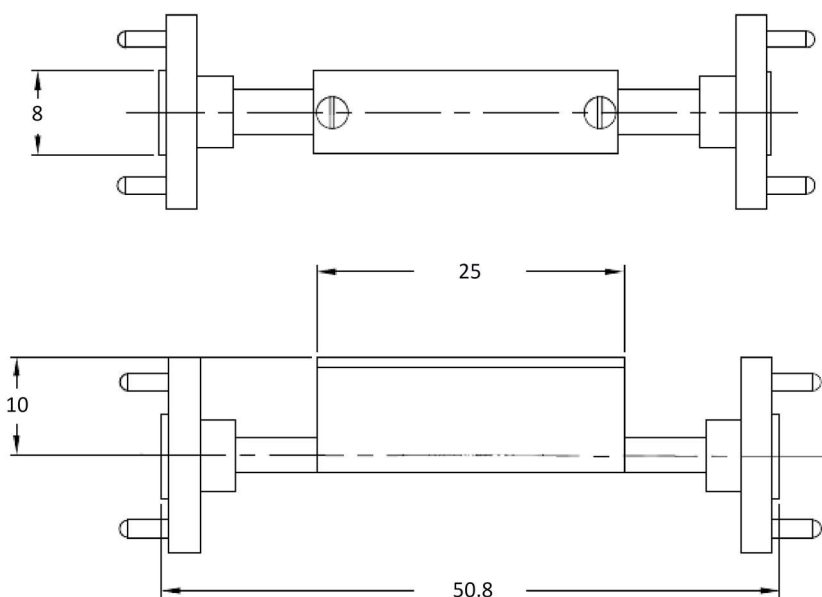
0.5 W (CW) MAX.

TEMPERATURE RANGE

OPERATING TEMPERATURE: -40°C to +85°C

Tolerance: ±0.2mm

Outline Drawing (Unit: mm)



2 x WR-06 WAVEGUIDE
W/ UG-387/U-M FLANGE

NOTES:

1. ALL SPECIFICATIONS ARE SUBJECT TO CHANGE WITHOUT NOTICE AT ANY TIME
2. CUSTOMER OUTLINE DRAWING FOR REFERENCE ONLY

