

ELECTRICAL DATA

FREQUENCY : DC-9GHz

IMPEDANCE: 50Ω

VSWR: 1.5:1MAX. (DC-6GHz)

1.6:1TYP. (6-9GHz)

DIELECTRIC WITHSTANDING VOLTAGE: 250 Vrms

INSULATION RESISTANCE: 500Mega Ohms

CENTER CONTACT RESISTANCE: 70 mini Ohm

OUTER CONTACT RESISTANCE: 20 mini Ohm

MECHANICAL DATA

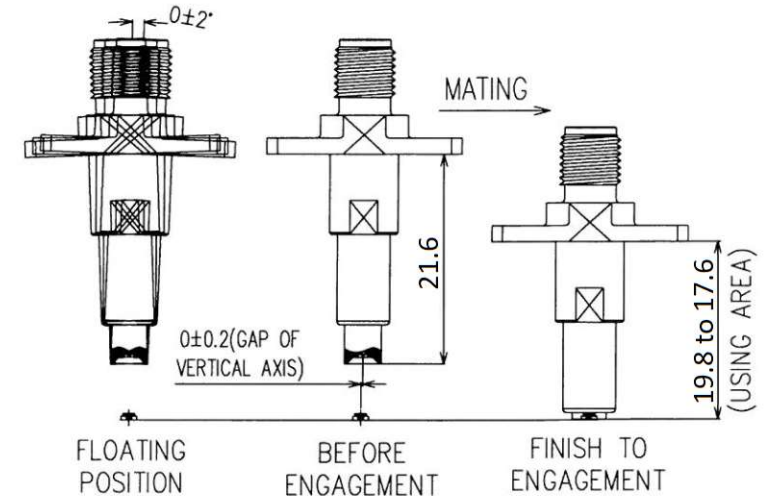
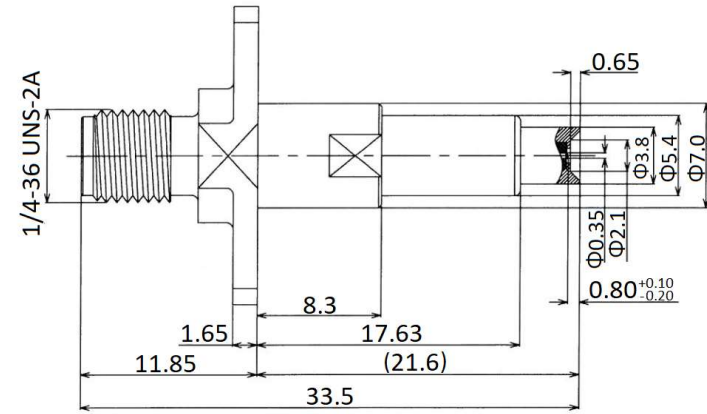
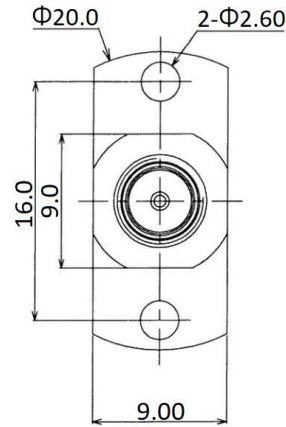
COUPLING METHOD: SNAP-ON

DURABILITY(MATING/UNMATING):10000 Cycles

APPLICATION



Fully mating with MM8430/MM8130



DESCRIPTION	MATERIALS	ROHS COMPLIANCE	UNIT: mm
BODY	BRASS, NICKEL PLATED	TOLERANCE:X.=±0.38 X.X=±0.25 .XX=±0.15	
CENTER PIN	BRASS/PHOSPHOR BRONZ, GOLD PLATED	TITLE SMA Female To MM8430/8130 Adapter, DC-9GHz	
SPRING	PIANO WIRE		
INSULATOR	TEFLON		

NOTES

1. ALL SPECIFICATIONS ARE SUBJECT TO CHANGE WITHOUT NOTICE AT ANY TIME

2. CUSTOMER OUTLINE DRAWING FOR REFERENCE ONLY

MVE Microwave 芝程科技有限公司

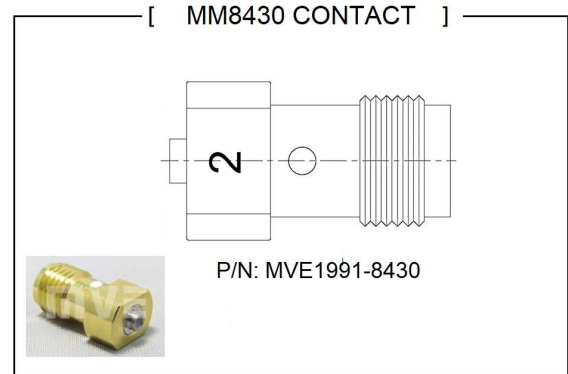
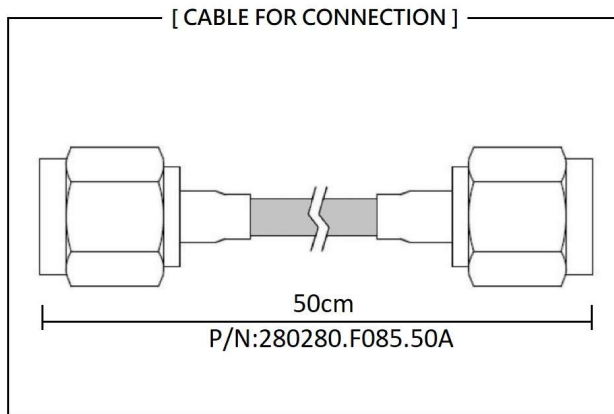
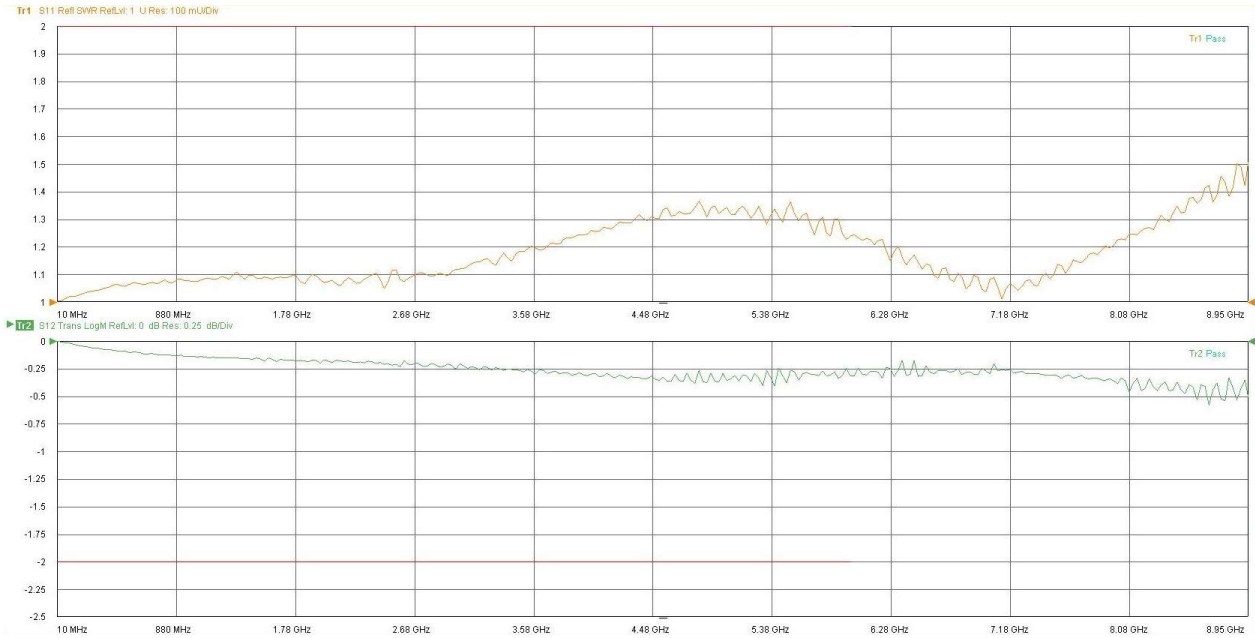
www.micro-mve.com

DC-67GHz RF& Microwave Components

PART NO.	MVE1971H	REV	2.1
SIZE: A	SHEET: 1/1	SCALE:	

Typical Test Result

PART NUMBER	DESCRIPTION
MVE1971H	SMA Female To MM8430 Adapter, DC-9GHz



NOTES

1. ALL SPECIFICATIONS ARE SUBJECT TO CHANGE WITHOUT NOTICE AT ANY TIME
2. CUSTOMER OUTLINE DRAWING FOR REFERENCE ONLY