

COAXIAL ADAPTER

4.3/10-4.3/10
Standard Series

Features

- ✓ High performance design
- ✓ High Durability

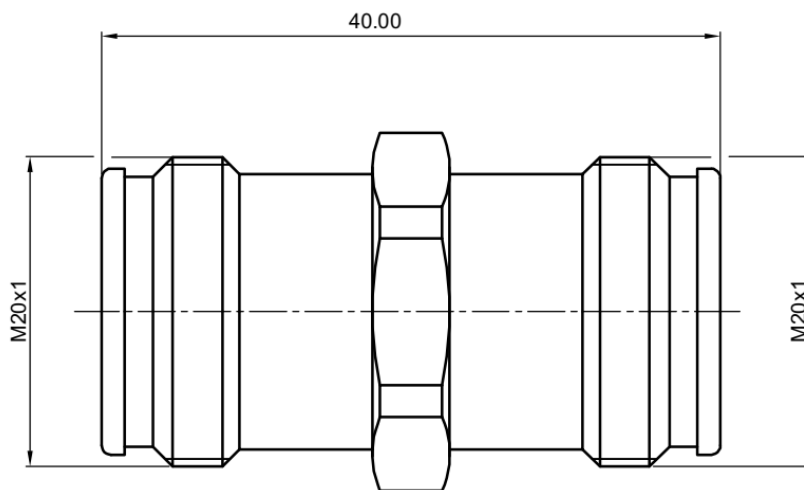


Specifications

PART NUMBER	MVE1254
DESCRIPTION	4.3/10 Female to 4.3/10 Female, Adapter, DC-3GHz
MECHANIAL	TEMPERATURE RANGE: -65~+165°C DURABILITY: 500CYCLE MIN.
ELECTRICAL	
FREQUENCY: DC-3GHz IMPEDANCE: 50Ω INSULATION RESISTANCE: $\geq 5000 \text{ M}\Omega$ WITHSTANDING VOLTAGE: 2500V	
MATERIALS	
BODY: BRASS, ALBALOY-PLATED PIN CONTACT: PHOSPHOR BRONZE, SILVER-PLATED INSULATOR: PTFE	

Tolerance: X= ± 0.5

Outline Drawing (Unit: mm)



NOTES:

1. ALL SPECIFICATIONS ARE SUBJECT TO CHANGE WITHOUT NOTICE AT ANY TIME
2. CUSTOMER OUTLINE DRAWING FOR REFERENCE ONLY

