

## ELECTRICAL DATA

FREQUENCY: DC-3GHz

IMPEDANCE: 100Ω

VSWR: 1.60:1@DC-3GHz

INSULATION RESISTANCE: 2000Mega-ohms

DIELECTRIC WITHSTANDING: 500Vrms

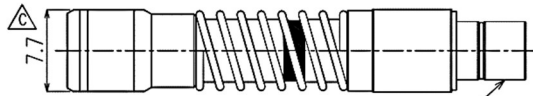
## MECHANICAL DATA

COUPLING METHOD: SLIDE-IN

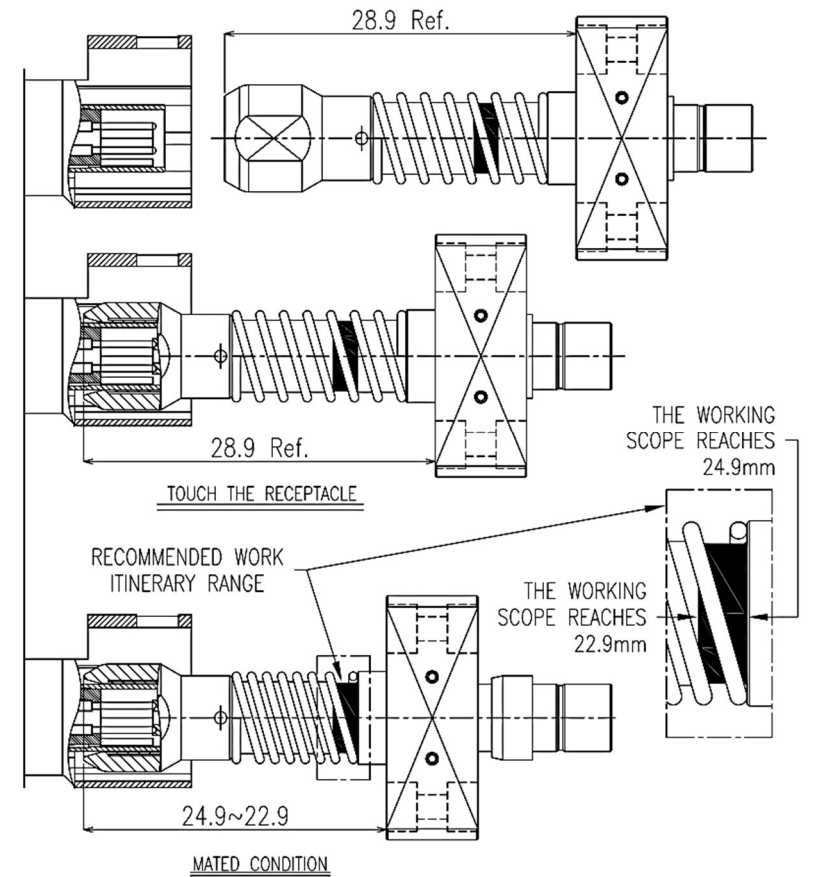
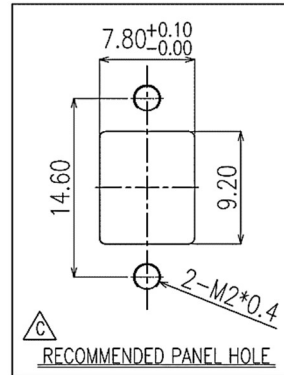
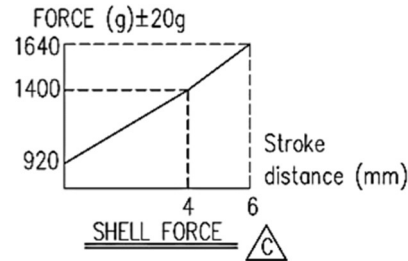
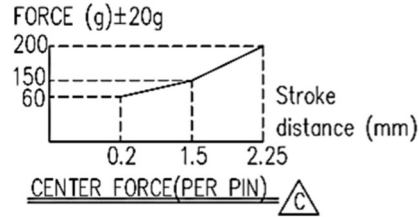
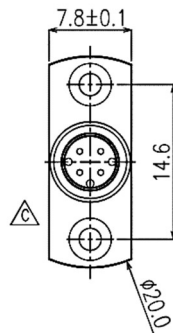
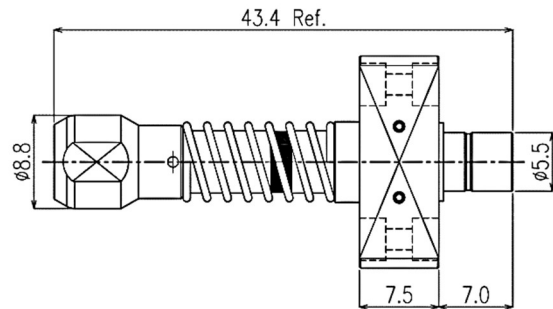
TEMPERATURE RANGE: -55~165°C

DURABILITY (MATING/UNMATING): 5000 CYCLES

## ROHS COMPLIANCE



HSD Plug



DESCRIPTION	MATERIALS	ROHS COMPLIANCE	UNIT: mm
BODY/SCREW/WASHER	BRASS,STEEL/NICKEL,GOLD PLATED	TOLERANCE: X=±0.38 X.X=±0.25 X.XX=±0.15	
CONTACT PIN	BRASS/BE-CU,GOLD PLATED	TITLE	
INSULATOR	TEFLON	HSD Male To HSD Female Floating Test	
SPRING	SUS304/SWPB	Probe	

**MVE** 芝程科技有限公司

[www.micro-mve.com](http://www.micro-mve.com)

DC-67GHz RF & Microwave Components

PART NO.	<b>MAP-S101</b>	REV	3.0
SIZE: A	SHEET: 1/2	SCALE:	

### NOTES

1. ALL SPECIFICATIONS ARE SUBJECT TO CHANGE WITHOUT NOTICE AT ANY TIME
2. CUSTOMER OUTLINE DRAWING FOR REFERENCE ONLY